

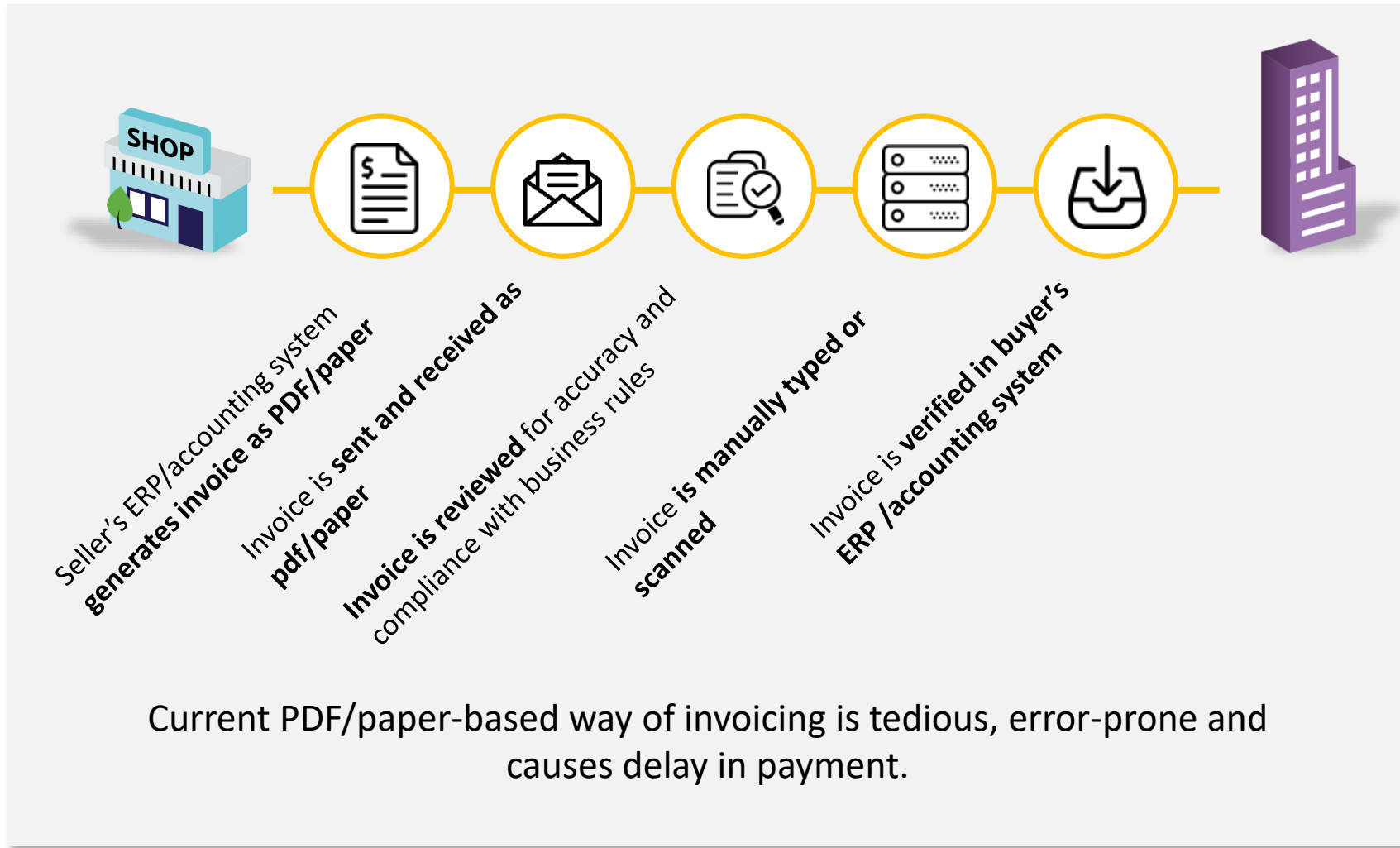
NATIONWIDE E-INVOICING INITIATIVE

E-Invoicing Project Office
INFOCOMM MEDIA DEVELOPMENT AUTHORITY



**PROBLEMS E-INVOICING
IS SOLVING**

MOST COMMON WAY TO INVOICE TODAY



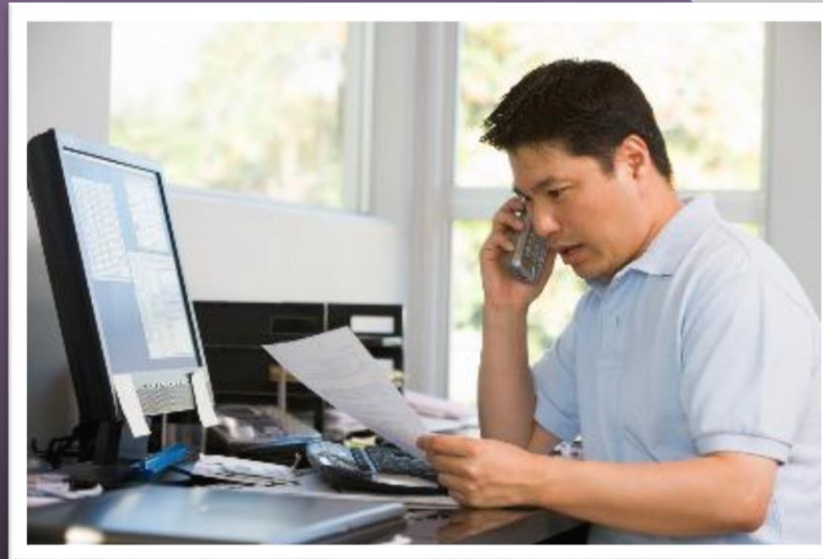
THE CHALLENGES TODAY

Chasing payment, managing partner conflicts due to inefficiency

Different invoicing methods dictated by partners

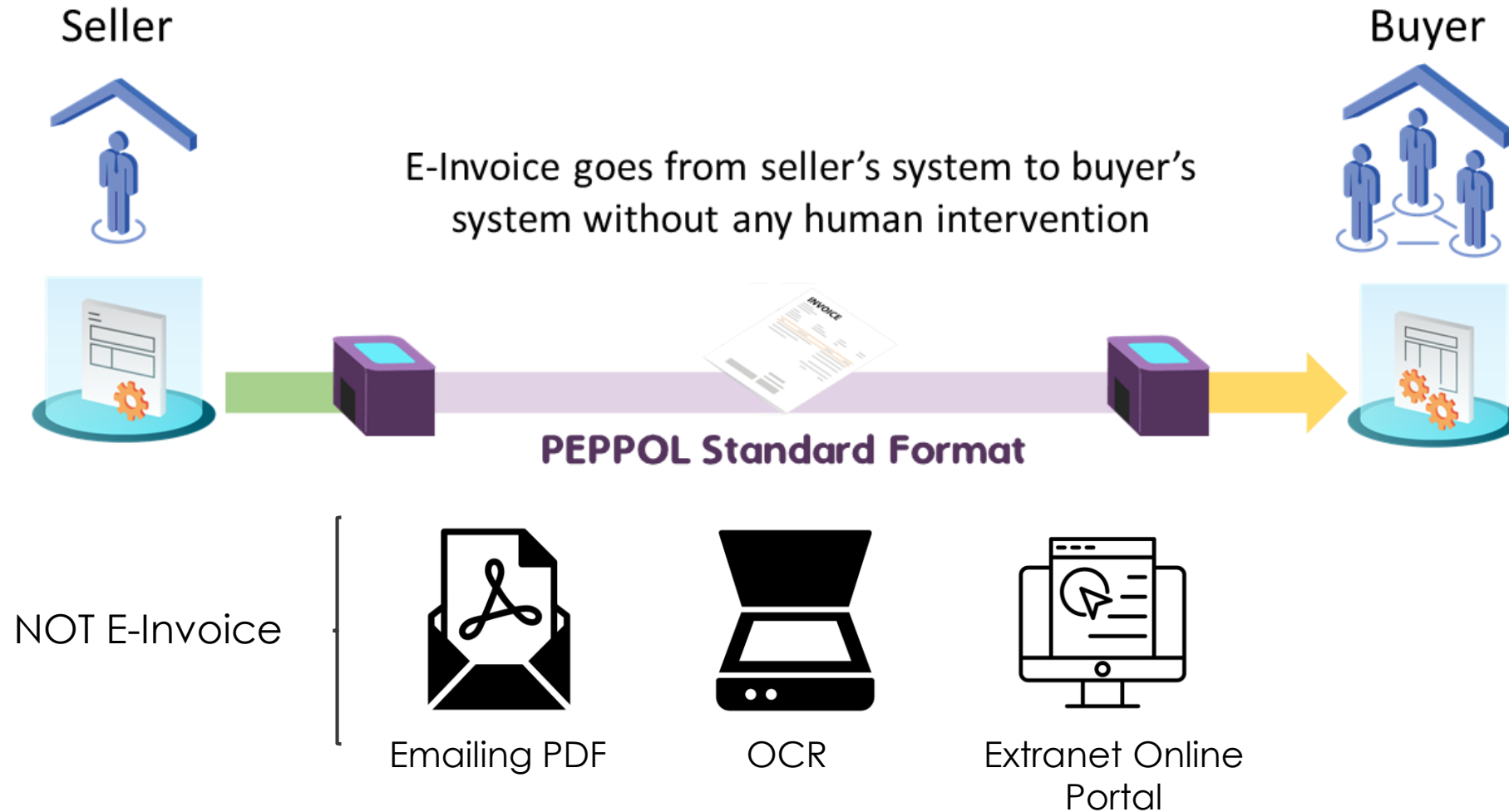
Not environmentally friendly

Non-digital hinders fraud detection and analytics



AREN'T WE ALREADY DOING E-INVOICING?

Electronic invoicing or e-invoicing allows direct transmission of invoices in structured digital format from one finance system to another resulting in faster payment.



WHY WOULD YOU COME ON BOARD?

Primary Reasons

Other Reasons

BUYER



- Time consuming & frustrations due to errors in processing manual invoices
- Intensive effort dealing with non-standard invoices coming from many suppliers

- Encourage suppliers to send e-invoice to help them reap benefits from digitalisation
- Create further efficiencies from data analytics

SELLER



- Potential cost savings from printing and posting invoices
- Reduction in errors from manual invoice handling and consequent follow-ups
- Faster payment

- Corporate Social Responsibility and demonstrate support on green movement

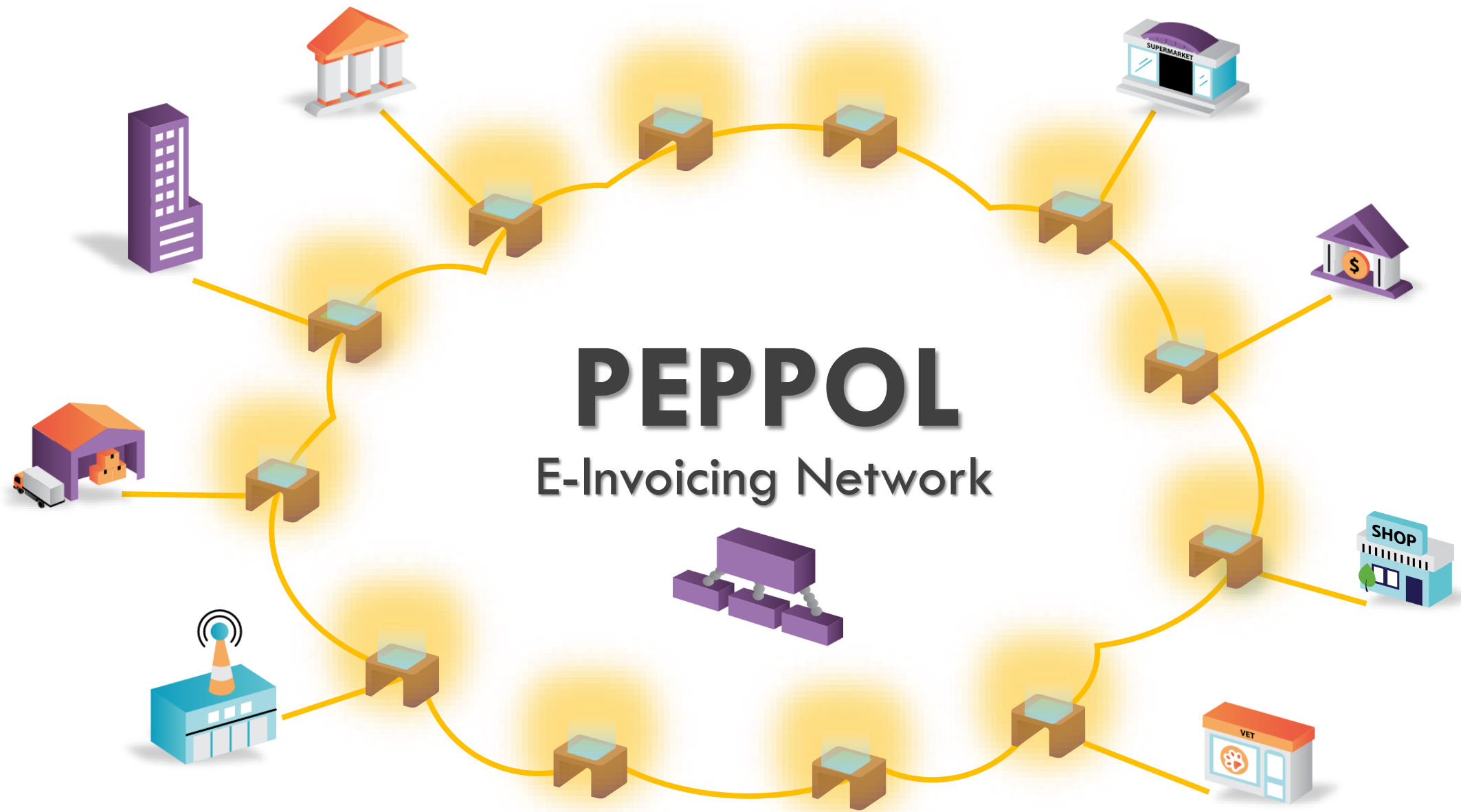
SME

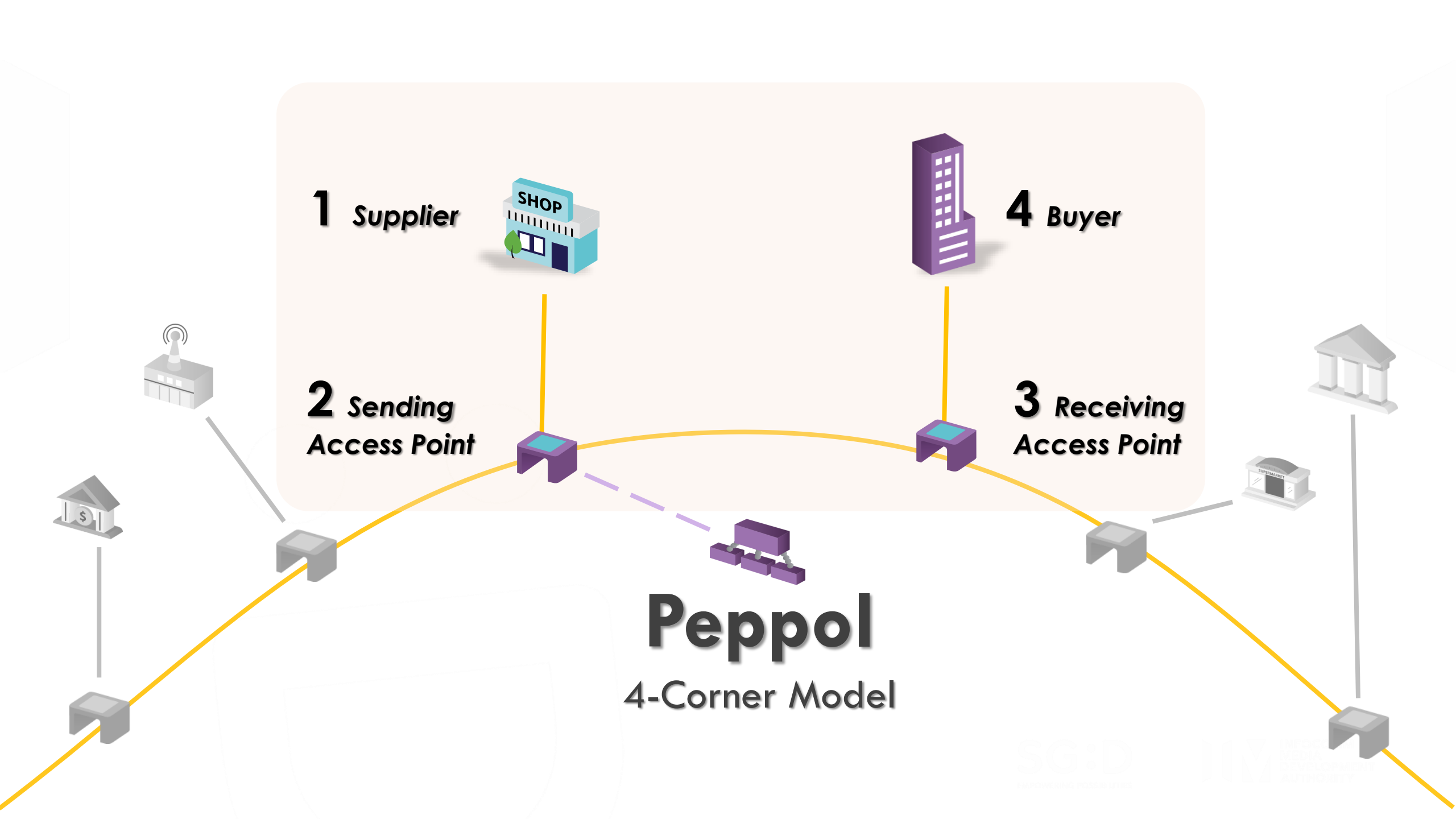


- Free locked-up working capital awaiting manual invoice generation
- Leverage accounting systems to do more
- Earlier payment
- Access to funding (future)

- Need to comply with buyers' requirements

**ABOUT
PEPPOL E-DELIVERY NETWORK**





1 Supplier



4 Buyer



2 Sending Access Point



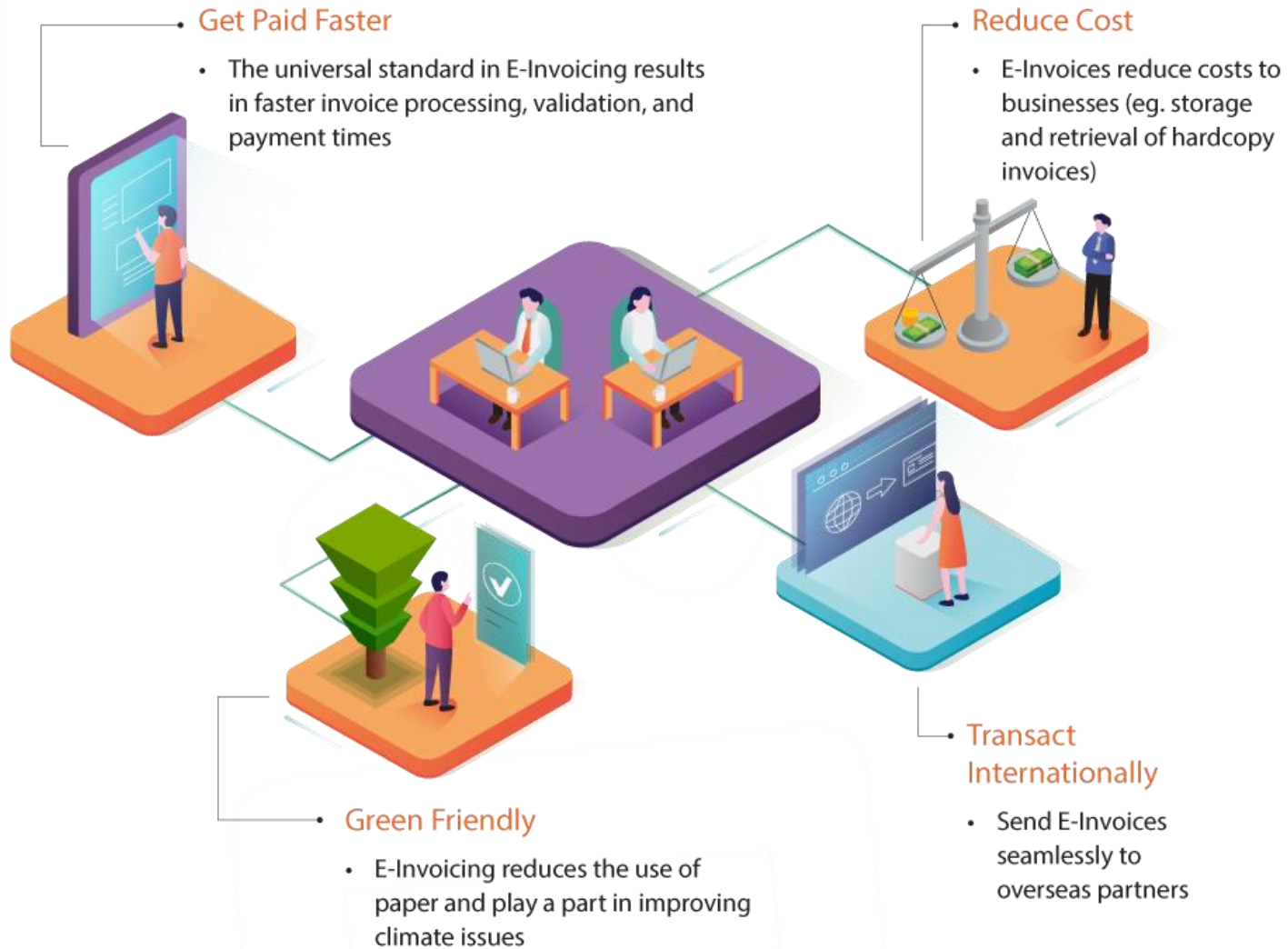
3 Receiving Access Point



Peppol

4-Corner Model

Benefits of E-Invoicing



Benefits of Peppol

CONNECT ONE CONNECT ALL
Participants connect to one AP and they are connected to all participants on the network.

EACH CONVERT YOUR OWN
Each participant handles their end of data conversion with their AP. APs exchange business document based on standard Peppol format.

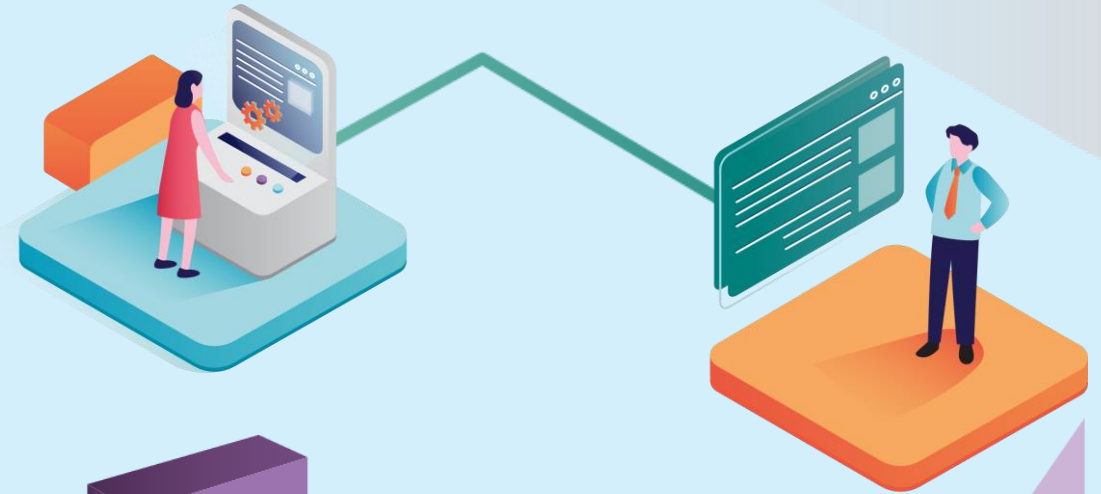
LOW COST
No AP interconnect charges. Thus e-invoice delivery charges are expected to be low. APs charge based on value-added services

MORE THAN E-INVOICE
The same network will in future also support delivery of catalogues and orders.

STEPS TO GET ON-BOARD

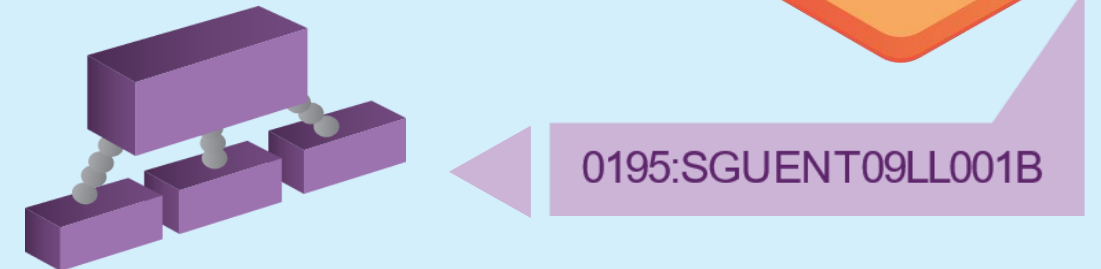
1. Get Connected

Connect your business system to the Peppol network. If you are using a solution from a Peppol Ready Solution Provider, you are already connected.



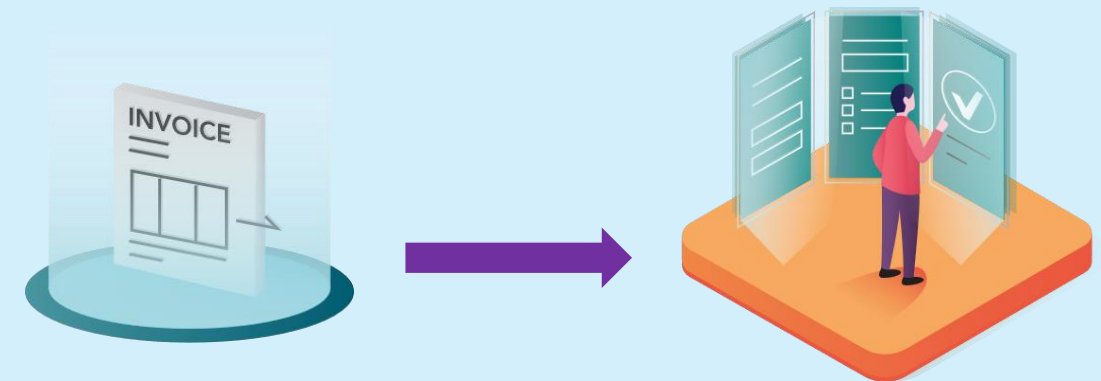
2. Register

Register your business in the Global Directory with your business UEN.



3. Send & Receive

Find out your business partner's Peppol ID and send E-invoice.



WHO IS ON-BOARD

PEPPOL READY SERVICE PROVIDERS

Access Point Providers

Solution Providers



List of providers as of 20 Jan 2020

SUFFICIENT SOLUTION OPTIONS FOR DIFFERENT SIZES

CONSIDER SAVINGS
TO DECIDE INVESTMENT



LARGE ENTERPRISE
10000 Invoices/month

Cost Savings

- ~\$1M/year
- More than enough to cover system integration and transaction fees



SME
50 Invoices/month

Cost Savings

- \$400/month
- 1/4 staff cost?

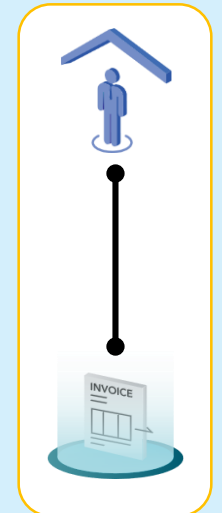
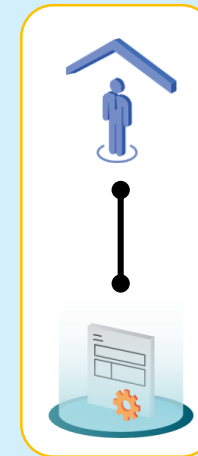
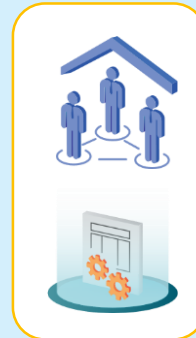
Business with In-house
Solutions



Business Using Service
Provider's Solution

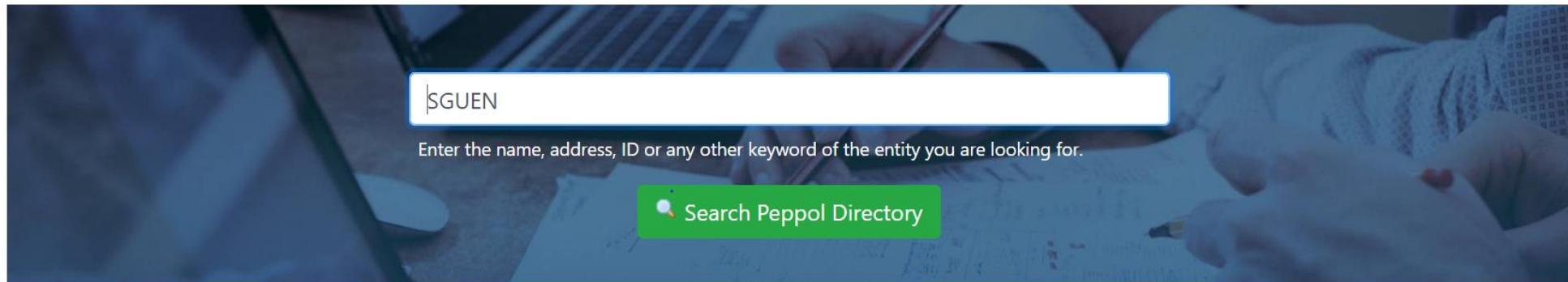
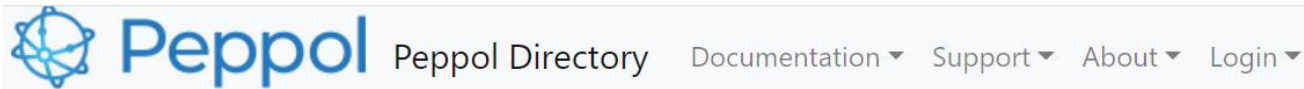


Simple Low Cost
Solutions Available



BUSINESSES ON THE NETWORK TODAY


Businesses on the network can be searched using the Open Peppol directory.
Link: directory.peppol.eu




Found 50 entities matching 'SGUEN'

Found more entities than displayed (696 entries exist). Try to be more specific.

1. Participant ID: 0195:SGUEN196700390K (Infocomm Media Development Authority)

Country:  Singapore (SG)

Entity Name: F&N FOODS PTE LTD (English)

 Show details

2. Participant ID: 0195:SGUEN196800397K (Infocomm Media Development Authority)

Country:  Singapore (SG)

WHY ALL SHOULD SUPPORT

Activities Involved In Manual Invoicing

Receiving mail or courier

Categorizing it into various nature/groups

Distributing invoices to respective department

Human checking on the line items to match usage & price

Scanning hardcopy into system using OCR and check

Manually inputting into system for invoice recording

Physically filing invoice and storing



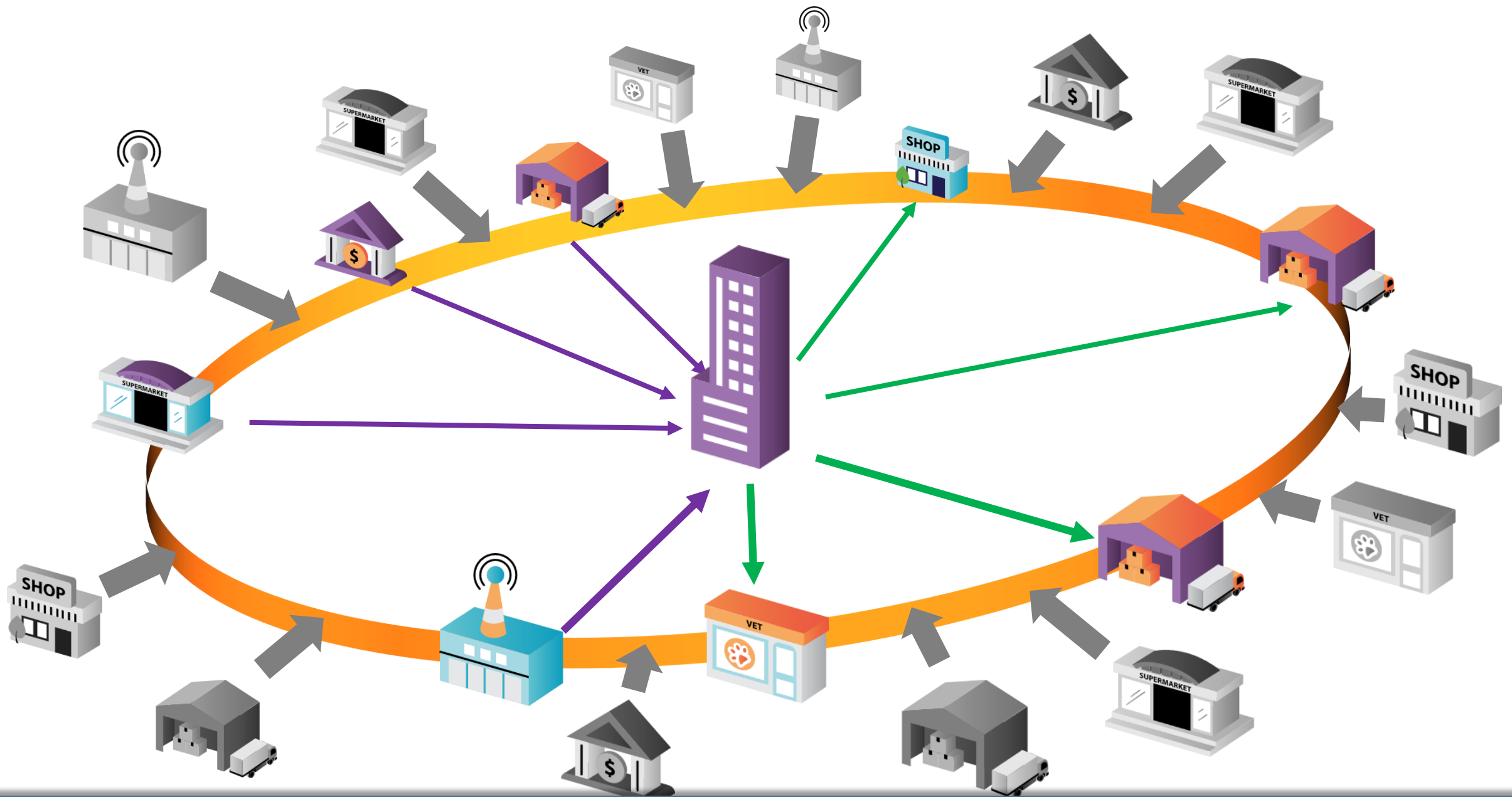
If \$8 is the cost for handling 1 manual invoice
 $(\$8 \times 1000) \times 12 \text{ months} = \sim \100K

2-3 staff handling 1000 invoices a month

\$8 per manual invoice



440M Invoices/Year
80% Not e-invoice



Digitalise Your Business Network With E-Invoicing

Join me!
Bring along your
business network!

For more information:

<http://www.imda.gov.sg/einvoice>
einvoice@imda.gov.sg

