



Getvisibility

Eugene Low

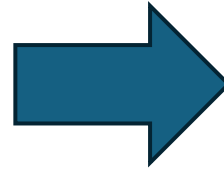
Where is my data?



- Uncategorized Data
- Mislocated Data
- Over-retained Data
- Over-permissioned Data
- Lack of context
- Duplicates

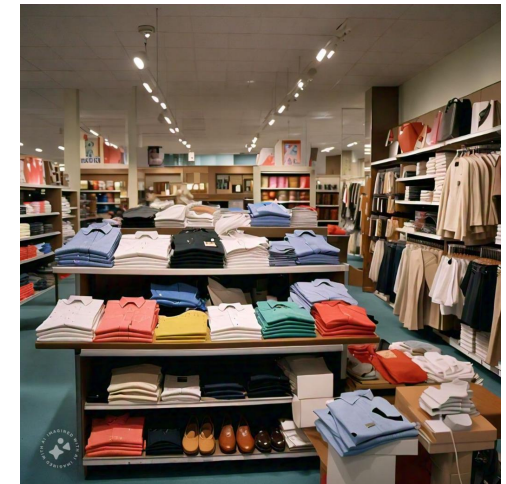
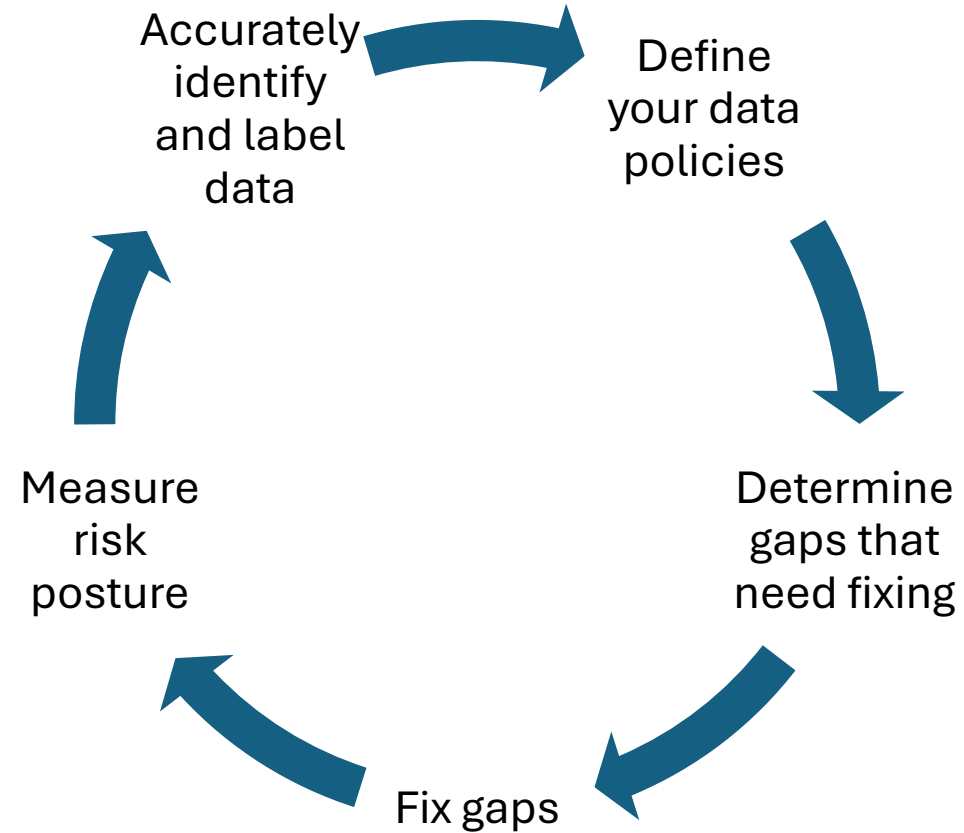
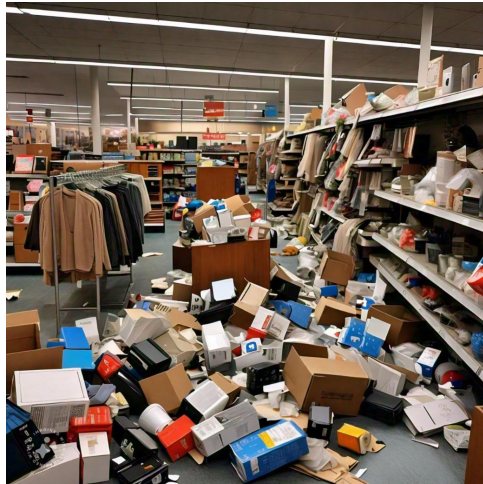
RISK

Data Security Posture Management

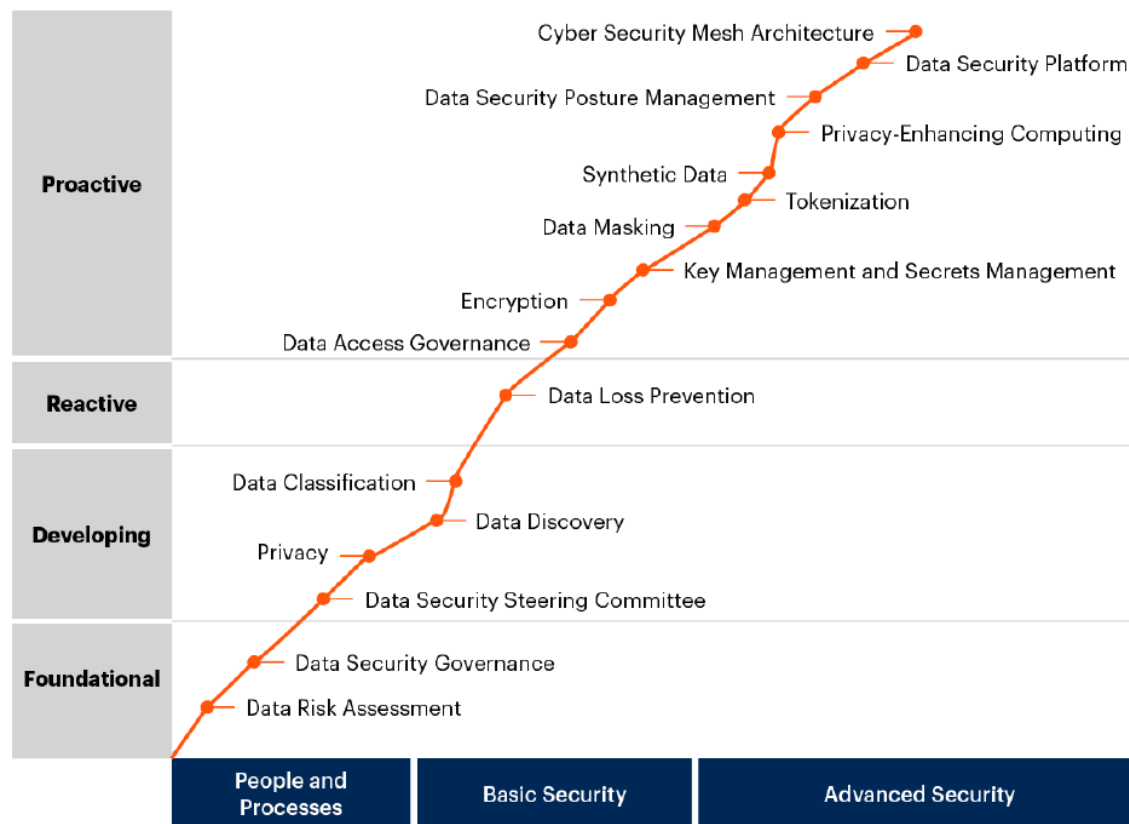


RISK ↓

Data Security Posture Management

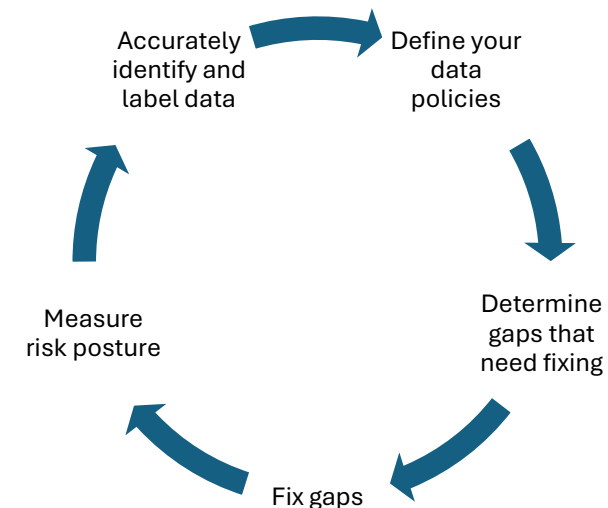


Data Security Maturity Roadmap

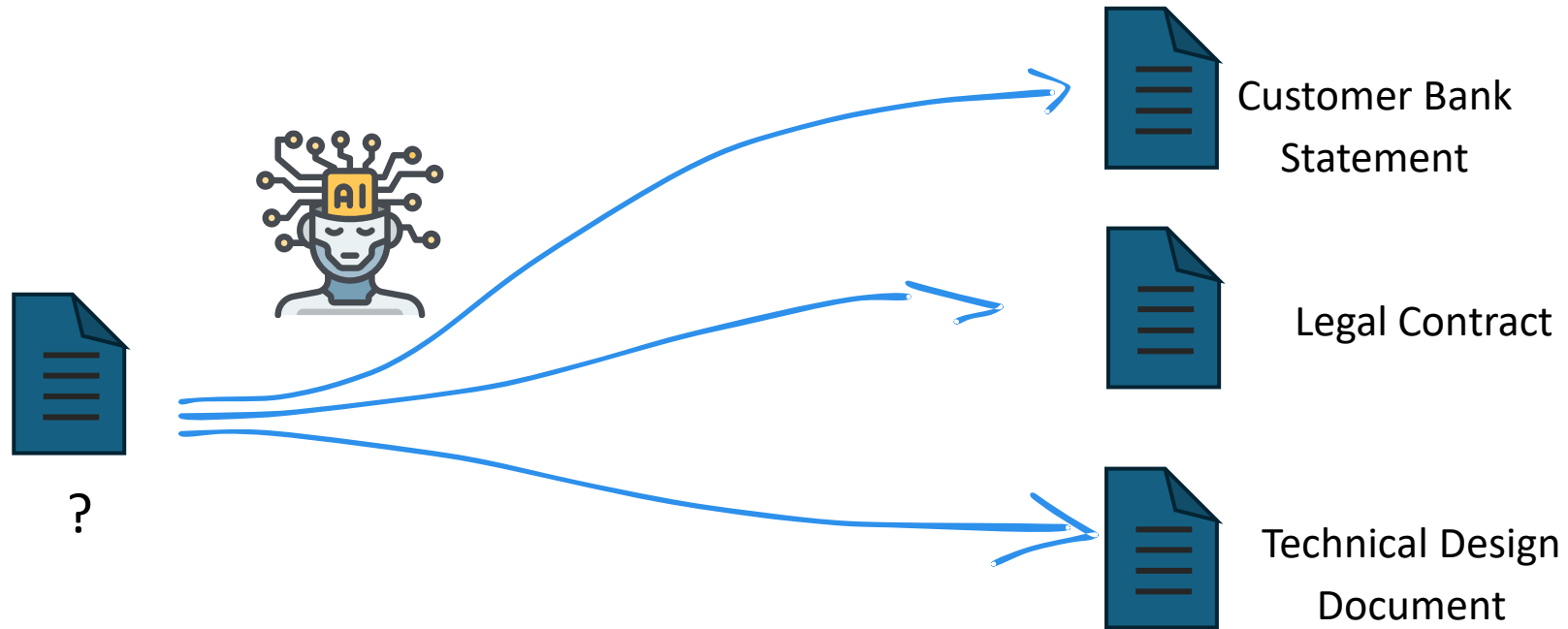


Source: Gartner
787538_C

Source: Gartner Security
Leaders Guide 2023



Accurately Identify and Label Data



- We use AI to identify business document categories and classify data with >95% accuracy

Define your Data Policies

1. Define your departments

2. Define assets under each department

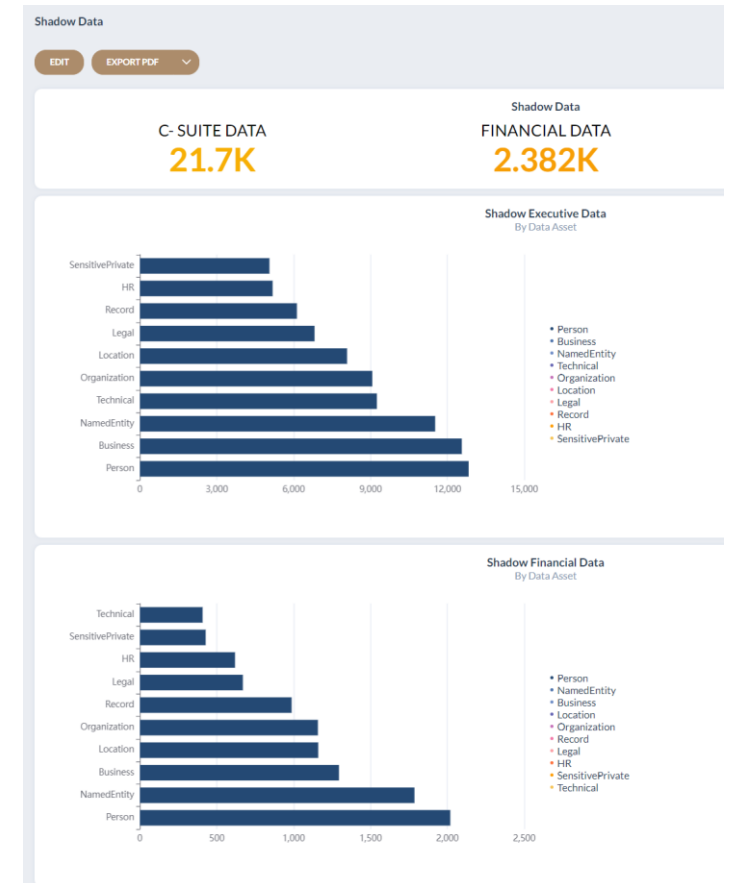
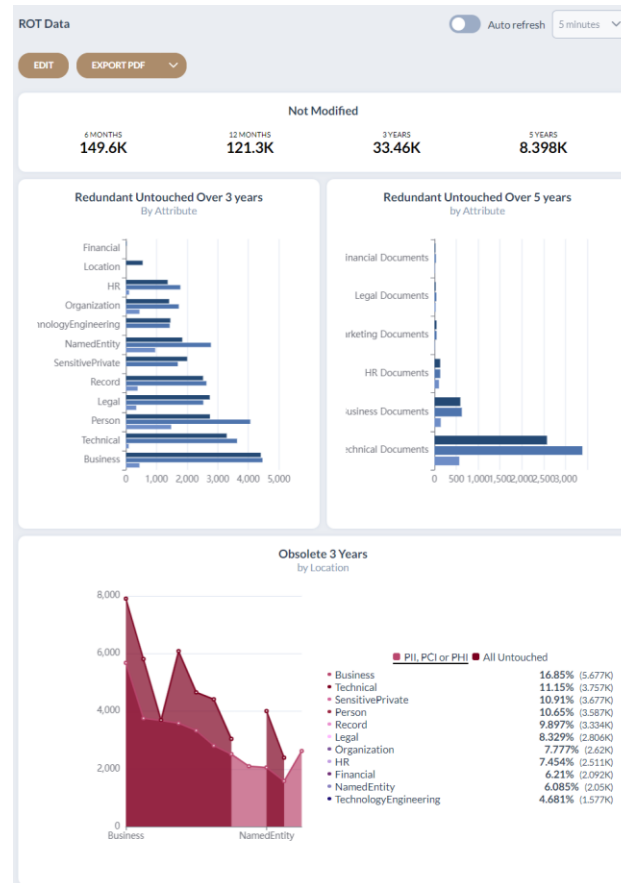
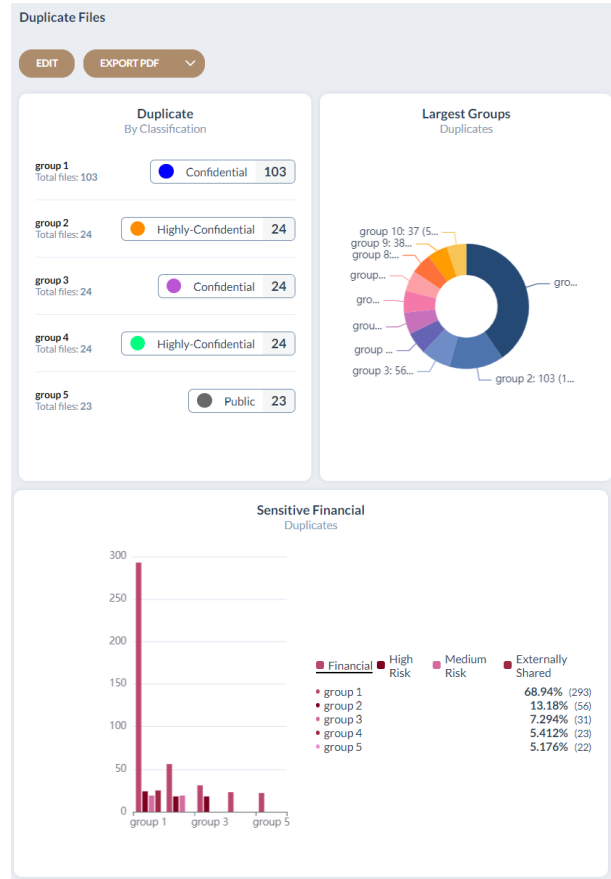
3. Define owners, classification, location, retention policy, etc. for each asset

The screenshot shows a web interface for defining data policies. It features a top navigation bar with tabs for 'Legal', 'Finance', 'IT', 'Operations', and 'HR'. Below this is a list of asset categories: 'Commercial Contract', 'Health, Safety and Compliance Document', 'Legal Customer Contracts', and 'M&A'. The 'M&A' category is expanded to show an 'Asset Profile' form. This form includes several fields: 'Data Asset Owner' (Charles Yeong - charles.yeong@gv.com), 'Data Custodian' (Jason Lim - jason.lim@gv.com), 'Location' (Sharepoint Online), 'Folder' (/sites/omed/Shared Documents/Confidential), 'Classification' (Confidential), 'Replacement Value' (Very High), and 'Data Security Priority' (Critical). Each field has a dropdown arrow and a close button (X).

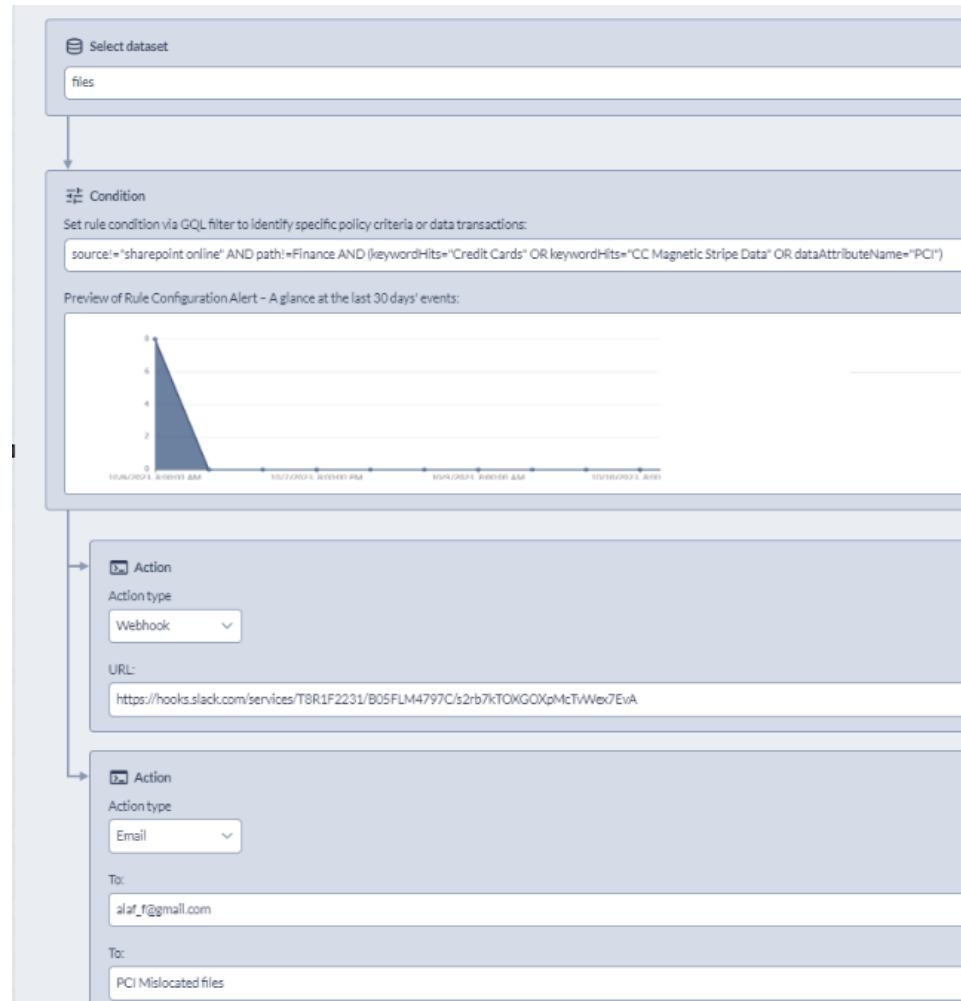
Asset Profile		
Data Asset Owner	Data Custodian	Location
Charles Yeong - charles.yeong@gv.com	Jason Lim - jason.lim@gv.com	Sharepoint Online
Folder	Classification	Replacement Value
/sites/omed/Shared Documents/Confidential	Confidential	Very High
Data Security Priority		
Critical		

Determine Deviations from Org Policies

Duplicate data/ Redundant Data/ Shadow Data



Automate Compliance and Security with Workflows



Condition

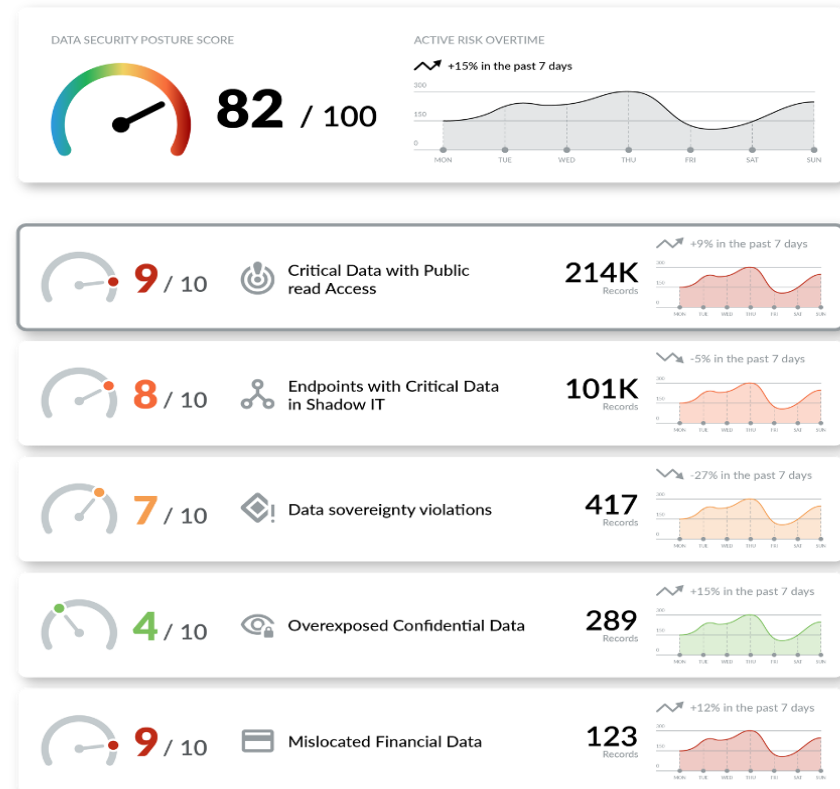
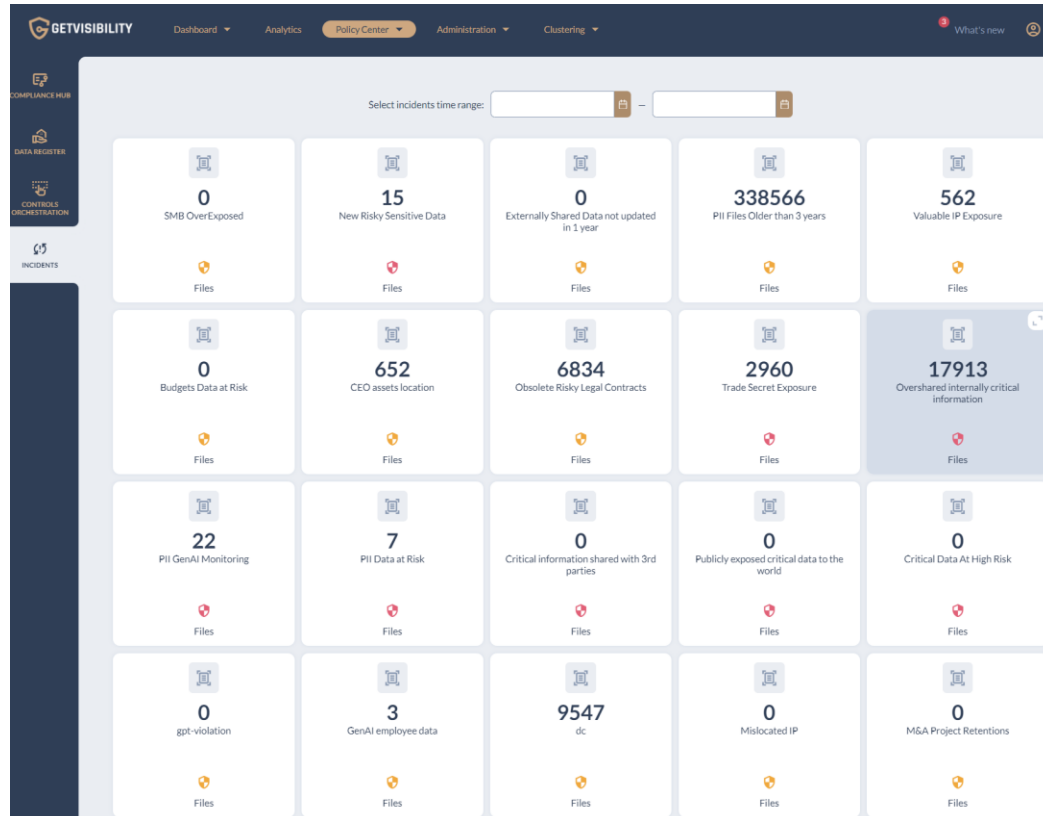


Action: automated scripts



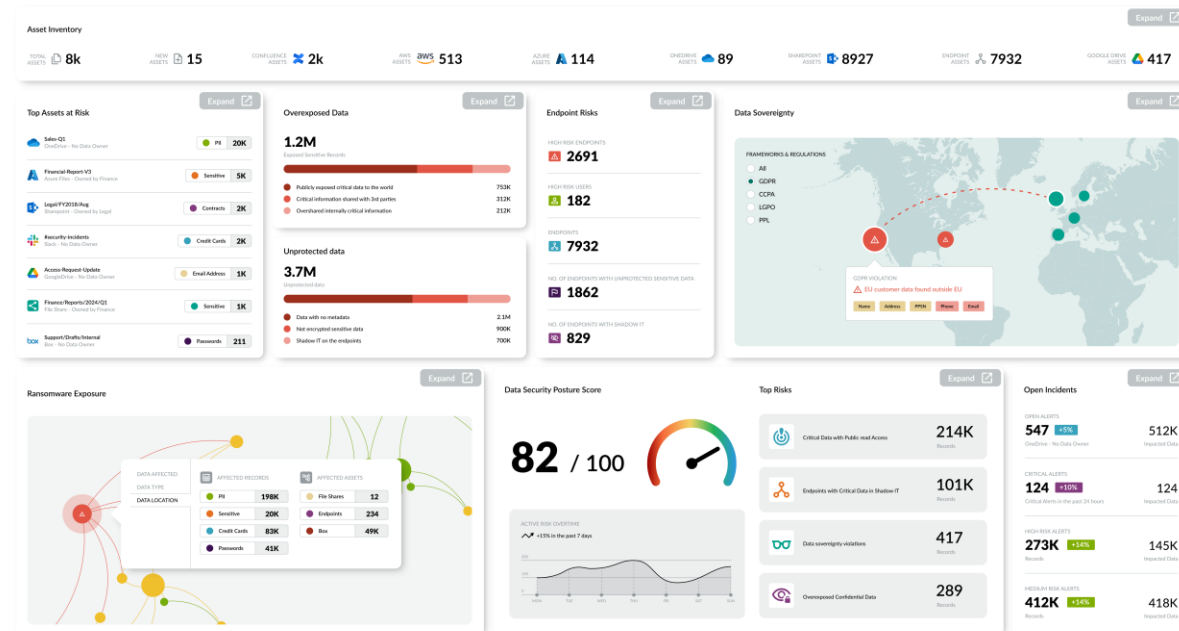
Email Notify: Business User

Measure Risk Posture



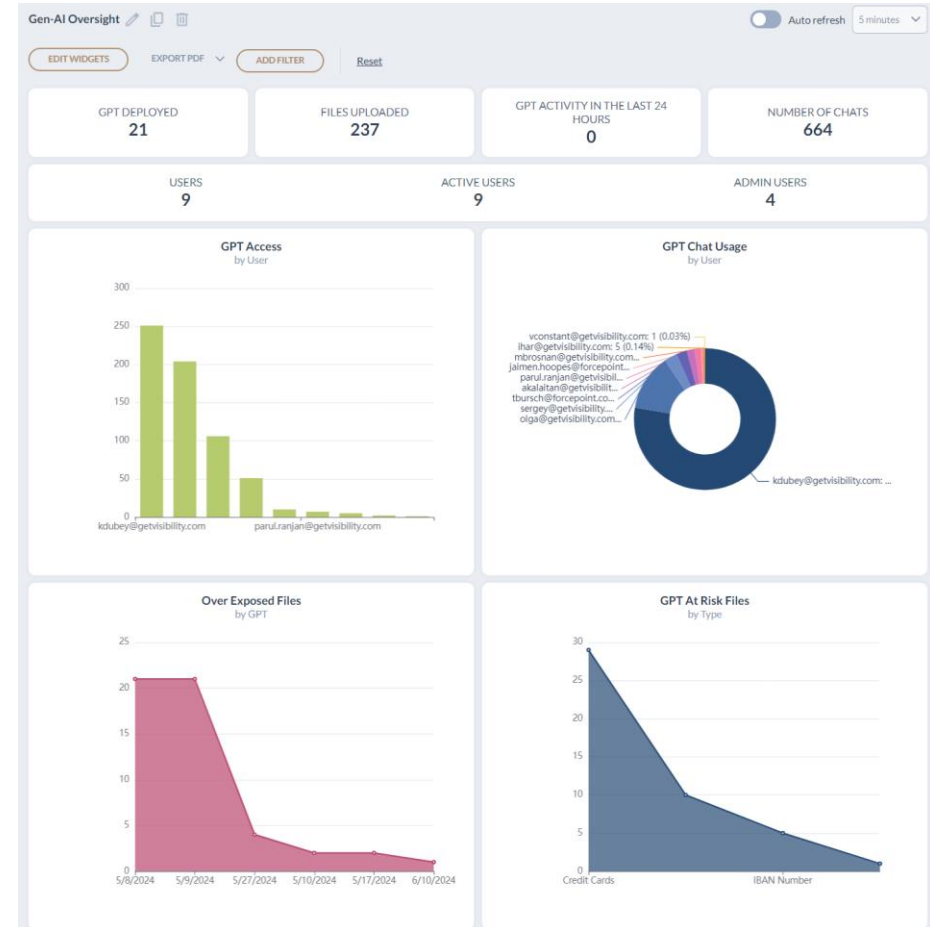
Getvisibility Benefits

- Accuracy, accuracy, accuracy
- Quick Time to Value: Prebuilt AI models that scan and classify on Day 1
- Easy Reporting: Prebuilt templates/dashboards to benchmark top risks to organisations, and current posture
- Seamless Remediation: Remediate straight from the platform, or send alerts to stakeholders directly for action



Gen AI Oversight and Risks

- Monitor GenAI activity, tracking data and user interactions
- Automatically classify data based on pre-defined policies or industry regulations
- Comprehensive view of your GenAI landscape, enabling informed decision-making



Case Study: ME Bank Achieved Data Security and Privacy Compliance

Profile: One of the top banks in ME with 13,500 Staff

Challenges:

- Extremely high velocity of data creation
- Very high-risk profile due to unstructured data on premises and in the cloud
- Sensitive information included budgets, public filings, price lists, salaries, bank account numbers, contracts, PII
- Intense scrutiny from regulatory mandates

Outcomes in First 6 Months:

- Within 1 week of deployment had discovered large repositories of risky data within SharePoint and OneDrive.
- Catalogue, classified and mapped discovered data
- File analysis and risk assessment reports
- DLP enablement metrics showed success
- Able to meet data protection and regulatory compliance

