



# USING AI IN SMART FACILITIES MANAGEMENT



# About SIMPPLE

---

## Who are we

Founded in 2016, SIMPPLE LTD and its subsidiaries delivers disruptive technology for the facilities management (FM) industry.

Powered by its proprietary SIMPPLE AI technological platform that leverages machine learning, computer visioning, and data science, facilities managers and supervisors are now able to:

- Access humans, robots and IoT assets on a singular autonomous ecosystem
- Manage their sites through data analytics
- Enhance overall productivity through workforce management to drive efficiency in the maintenance, security and hygiene of a building

[Watch SIMPPLE Software at work video](#)



# Introducing SIMPPL E Software & Platform

Our flagship integrated software platform

IFSC presents an award-winning solution that **integrates the technology requirements** within a facility such as **robotics, software** and **IoT sensors**. SIMPPL E can help facility managers/supervisors **manage a building and its workforce** in a **single platform** and enable the future of **Smart Building automation** through **IoT Sensors and Vision**.

**SIMPPL E**  
SIMPLIFYING PROCESSES FOR PEOPLE

**IoT Sensors**  
unabiz Milesight

**Multifunctional Robotics**  
KABAM ROBOTICS  
GAUSSIAN ROBOTICS

**Facility Services Software**

**Facility Services Artificial Intelligence**

Accountability  
Productivity  
Automation

## IoT Sensors

IoT sensors enable "cleaning on demand" to ensure quality standards and productivity

## Robotics

Multifunctional robotics double the productivity and maximizes the ROI by doing manual jobs that are replaceable

## Artificial Intelligence

SIMPPL E takes in the data from IoT Sensors and automates tasks between robotics and human workforce based on rules.





# THE SIMPPL FLOW



## Attendance

- Attendance checklist
- Auto-assignment of tasks based on attendance
- Personal file of each officer to track performance



## Feedback

- Community feedback
- Security Patrol Clocking Points
- Automated Work Order
- Location-based Feedback



## Robotics & IoT Sensors

- Track performance of robotic implementation
- Trends and Analysis from security systems and other IoT Sensors
- Automatic task-sending to Simple Operation

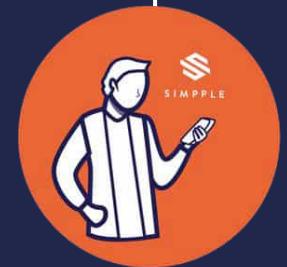
## Operations

- Automatically sends out security tasks based on schedules, audits, feedback from sensors & ad-hoc requirements.
- Workers are alerted through Whatsapp for easy adoption.
- Measures performance of individual officers for response times, and quality of work (integrated with Audit).



## Incident Reporting

- Score calculation based on incident report requirements
- Completed SOP Checklist
- Closed-loop system to ensure opened task are logged AND alerted to SS for follow up or reassignment.
- k (integrated with Audit).



# Defining Integrated Facilities Management



## Environmental Services (ES) ITM

### Core Soft FM (SFM) Services

- Sustainability
- Cleaning
- Housekeeping
- Space Management
- Waste Management
- Pest Control
- Environmental Monitoring
- Health and Safety
- Catering
- Landscaping and Plant
- Mail Management



## Security ITM

### Security Collaboration Platform (SCP)

- Visitor Management System
- Incident Management
- Security Robot
- Access Control Management
- Video Management System
- Risk Threat Detection & Prediction
- Carpark Management
- Mobile Patrol Management
- Extended Reality (XR)
- Physical Security Information Management (PSIM)
- Central Command Center



## Real Estate (RE) ITM

### Core Hard FM (HFM) Services

- Power & Electrical
- Mechanical Equipment
- Lift & Escalator
- Smoke & Fire Safety
- Building Maintenance
- HVAC
- Gas & Heating
- Water Management
- Chiller & Sprinkler
- Lighting
- Plumbing

## SIMPPLE Facilities Management Platform

Quality Management

People Management

Workflow Management

Artificial Intelligence

Waste Management

Internet-of-Things sensors

Robotics

Incident Management

Internet-of-Things sensors

Robotics

Asset Tracking

System Integration

Asset Management

Facility Assets

Internet-of-Things sensors

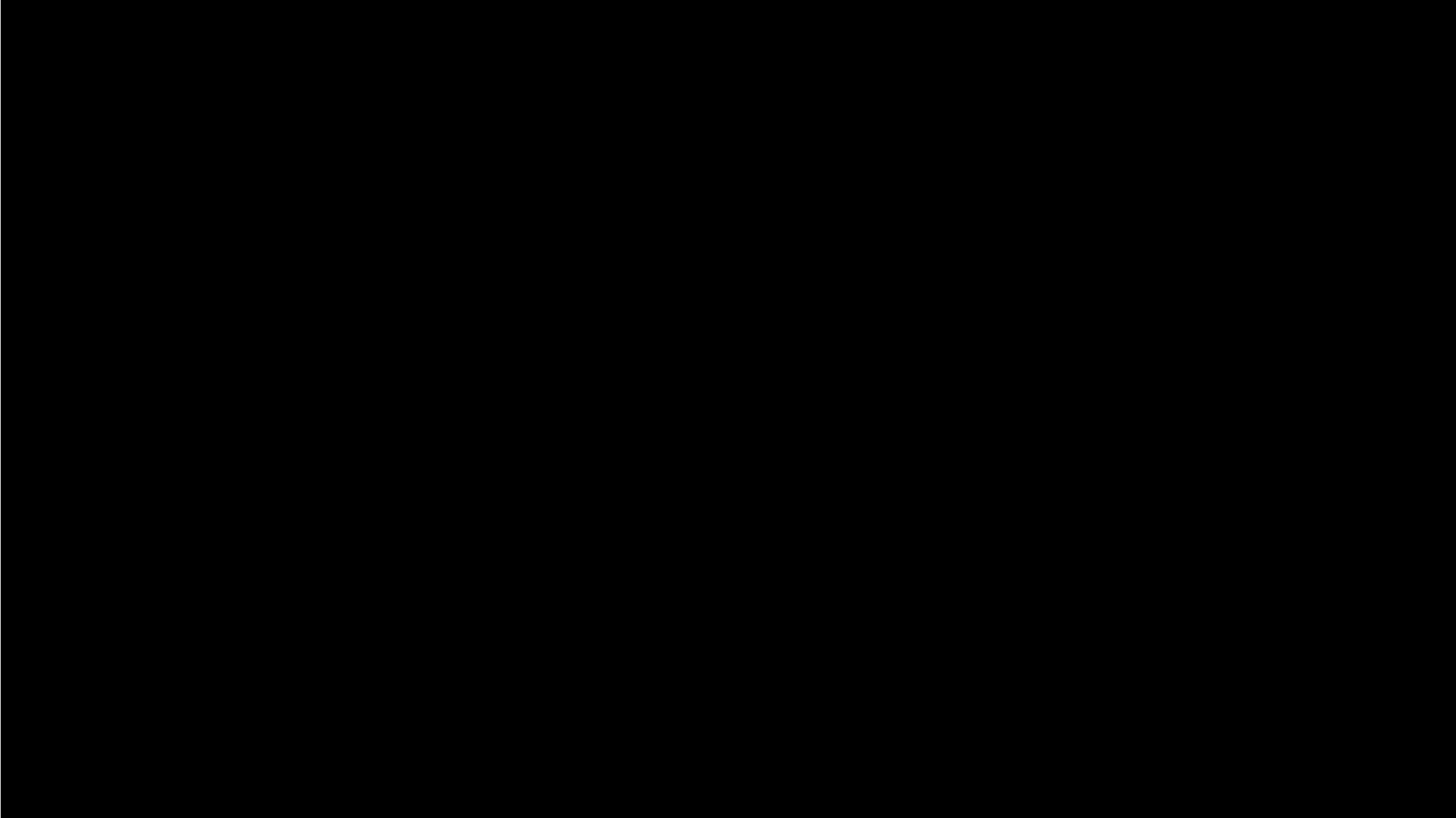
System Integration

# SIMPPLE AI 2022 Launch

Featured by ChannelNewsAsia (CNA) at the 2022 CleanEnviro Summit Singapore (CESG2022)



Another company is working on deploying robots

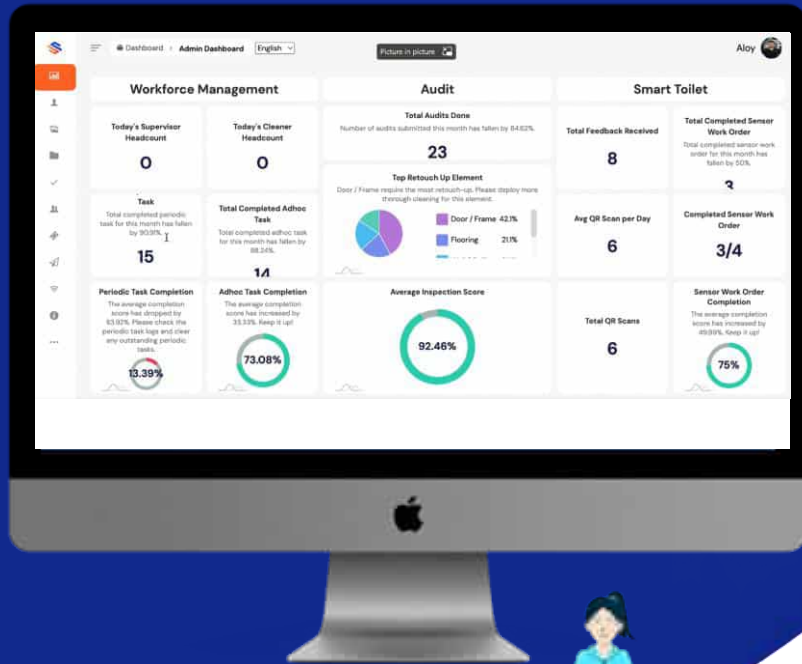


# The Future of FM is here

SIMPPLÉ is enabling change in the FM industry

## Evolution of Technology

## The Future of Facilities Management



## Beyond 2022 – SIMPPLÉ AI

SMART Building Management System that automates technology tools to drive autonomous operations

## 2021 – SIMPPLÉ Ecosystem

Data across all technology tools work together to give information and insights for better decision making and accountability

## 2017 – Robotics, Sensors & Software

Introduction of technology tools such as robotics, IoT Sensors and Software management to aid productivity and quality

## Traditional Operations

Manpower intensive, Reliant on conventional equipment



# Automating SIMPPLE platform with A.I.

Now reimagine a self-operating building with SIMPPLE.AI

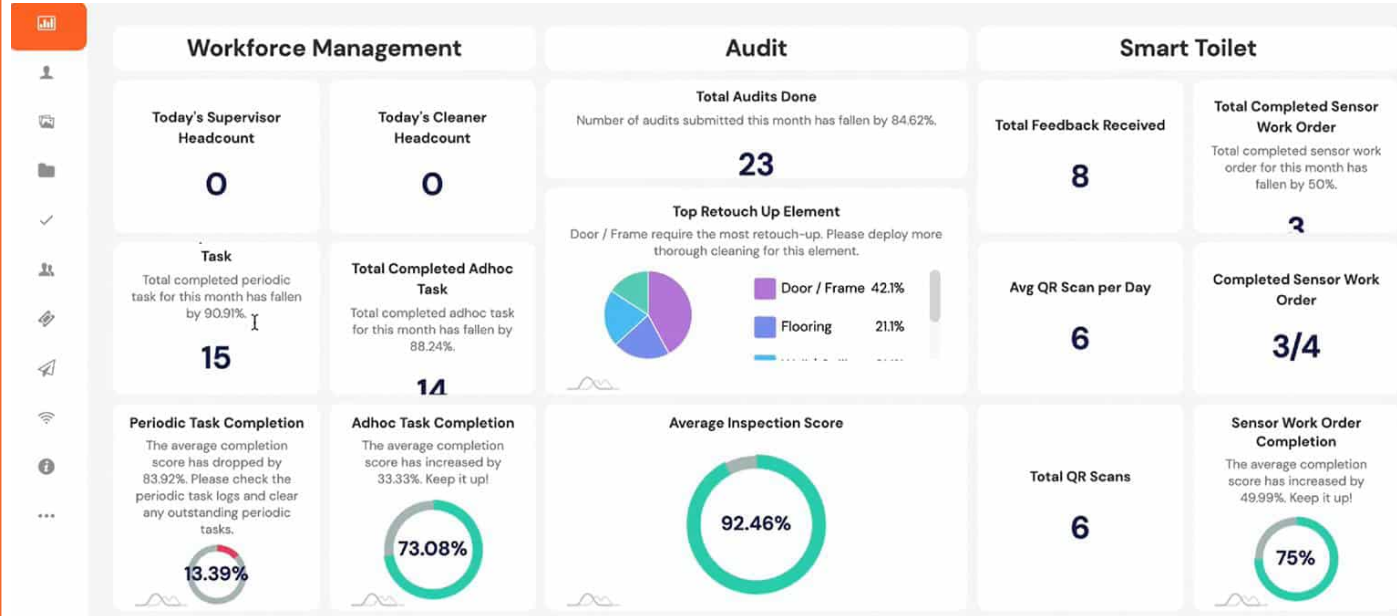


SIMPPLE



SIMPPLE.AI

Dashboard Sample



Advantage

- All-in-one **integrated workforce management/workflow automation SaaS** to assist in facility services while supporting the digitalisation journey of **Built Environment** and **Environmental Services** companies
- **Position buildings to be future-ready** with SIMPPLE.AI upgrade
- Projects typically achieve an average of **>70% productivity** combined
- Proper use of technology can **incentivize performance and behavior**
- **Reduced system bias** as there is minimal human intervention; **truthful** data

## SIMPPLE Platform: Holistic Management Overview

Add-ons:



Dynamic Monitoring



Optimal Asset/Resource Allocation through Automation



Integration with other soft/hard FM providers

Plug-in Autonomic Intelligence Engine



Buildings of the Future



SIMPPLE

Copyright 2022

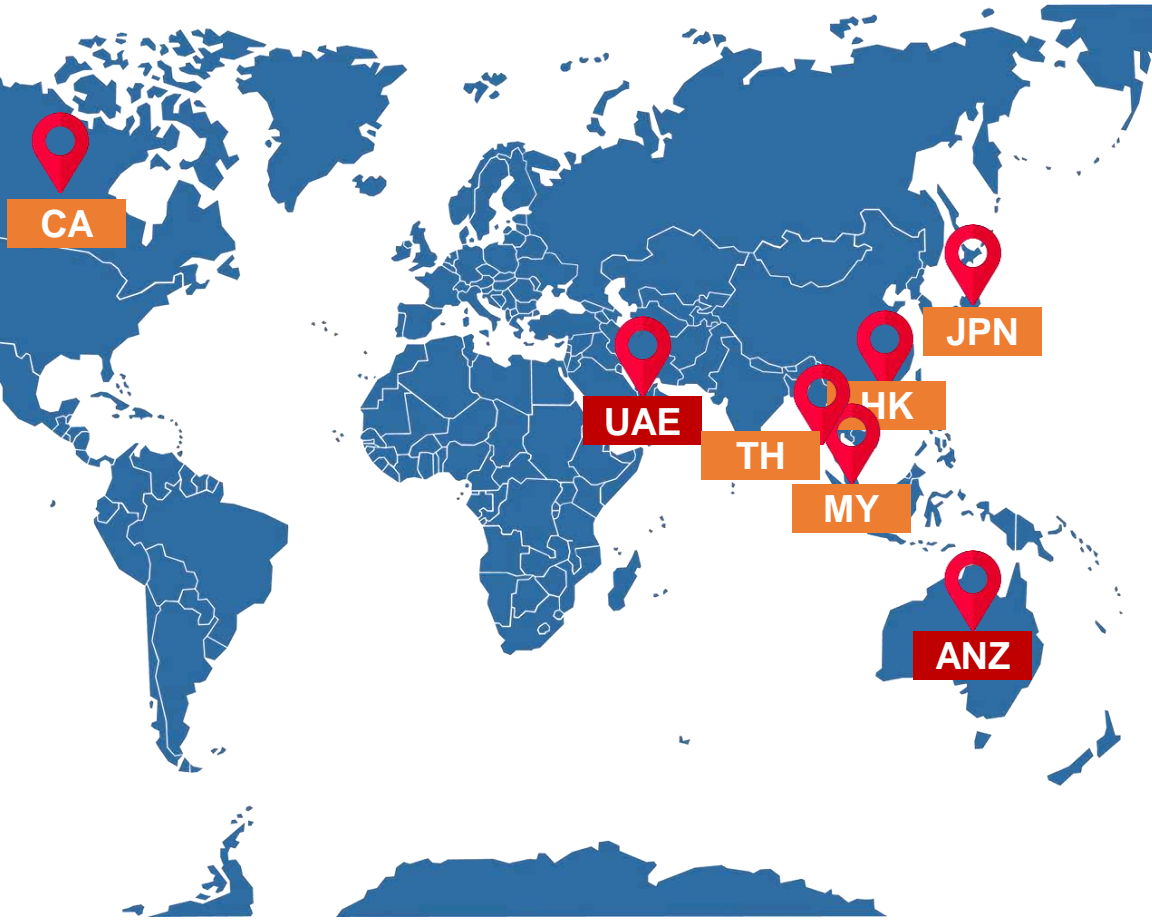
# Trusted by Clients

Clientele ranges from Property Owners, Facilities Management Companies and Contractors



# GTM Strategies and Partnerships

IFM Technology is a growing space that clients from overseas countries are demanding for



Existing presence

Recently set up a presence in



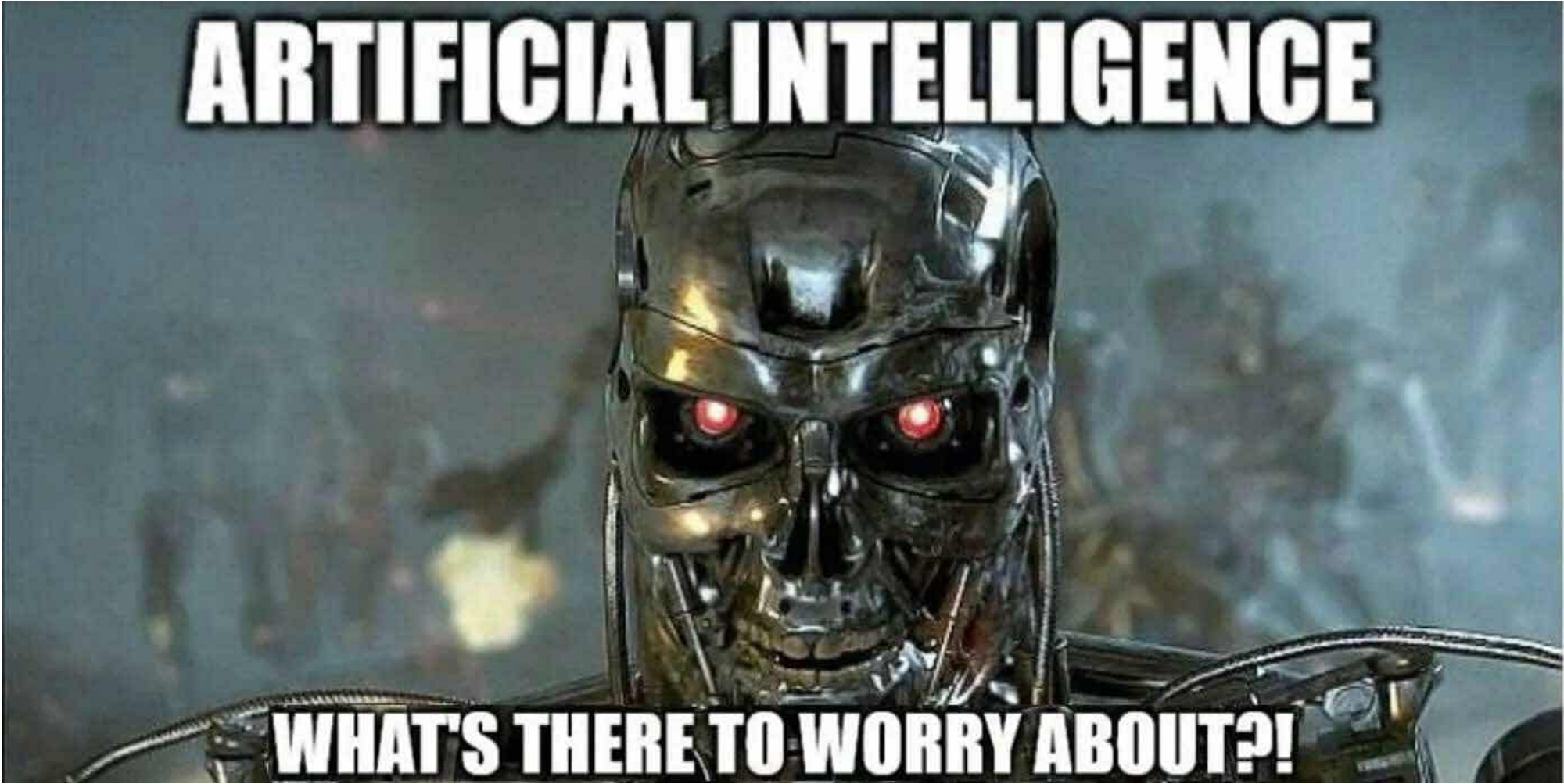
## SIMPPLE's Ecosystem Partners & Affiliations

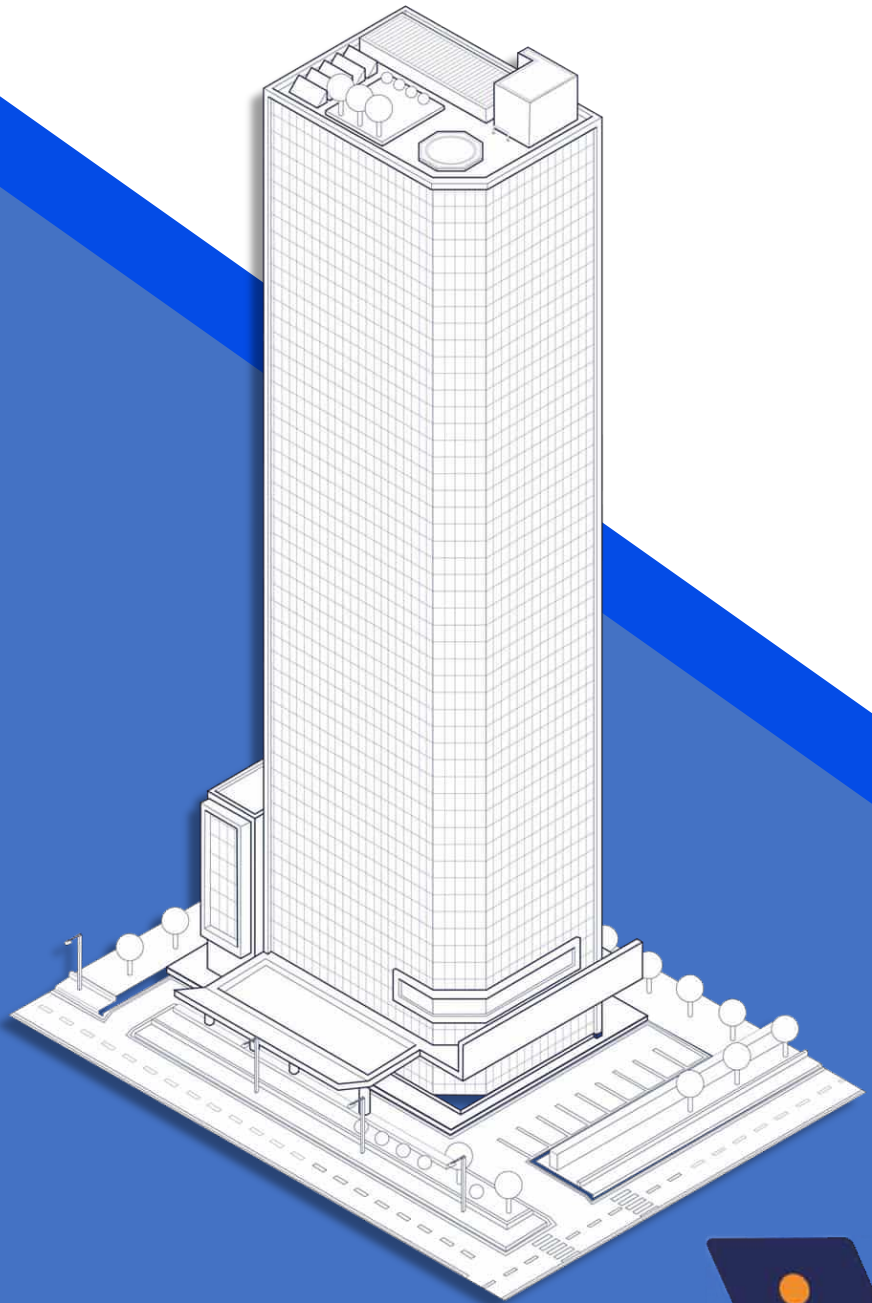


## SIMPPLE's Supplier Network



Any Questions?





# Thank You

Feel free to reach out for more information!

Contact Person: Su Youyi ([youyi@simppl.ai](mailto:youyi@simppl.ai))