



# Pagero and PEPPOL – from a technical point of view

Presented by: Jonas Edlund, Karan Shankar

Presented to: IMDA

Date: 3-4<sup>th</sup> July 2018

Information class: External

**PAGERO**

# What is PEPPOL?

---

- **PEPPOL – Pan-European Public Procurement On Line**
- EU-project 2008 – aims to simplify the development of e-commerce within Europe
- A network and transport infrastructure for exchange of digital business documents
- PEPPOL-authorities are responsible for connecting new operators, Access Points, to the PEPPOL network on behalf of OpenPEPPOL
- Every operator signs an agreement with a PEPPOL-authority if they want to join the network [e.g. Difi (NO), ESV (SE), ERST (DK), NHS (UK), Simpler Invoicing (NL) and IMDA (Singapore)].
- No Interoperability agreements or terms between the Access Points.



# Pagero and PEPPOL

<https://www.pagero.com/why-pagero/peppol/>

## OpenPEPPOL Coordinating Communities

- OpenPEPPOL Transport Infrastructure Coordinating Community (TICC)
- Post-Award Coordinating Community (PoACC)

## OpenPEPPOL Workgroups

- Validation and Quality Assurance Project
- MLR (Message Level Response)
- BLR (Business Level Response)
- PEPPOL Directory



First live in Austria

Best Practise in Norway

Best Access Point in UK

130,000+

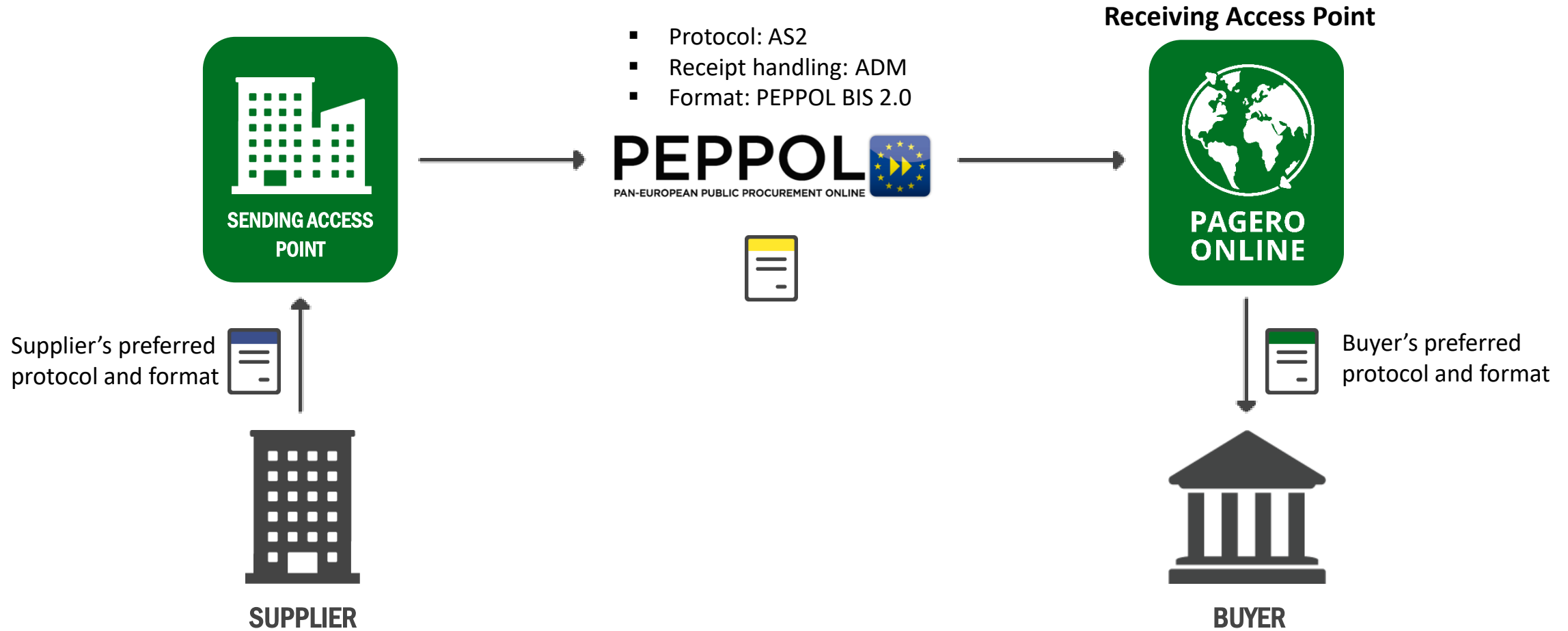
PEPPOL **RECIPIENTS** IN PAGERO NETWORK TODAY

30,000+

PEPPOL **SENDERS** IN PAGERO NETWORK TODAY

# Pagero and PEPPOL

## Overview





# Elements in PEPPOL

---

- Service Metadata Locator (**SML**) – “*master yellow pages*”
  - Hosted and maintained by the European Commission (contracted to OpenPEPPOL)
- Service Metadata Publisher (**SMP**) – detailed information about the Buyers ability (processes, document types), see example of ELMA on the next slide
  - Hosted by approved service providers or PEPPOL Authorities
- Access Point (**AP**)
  - Hosted by approved service providers, ERPs, etc.

## Participant: CLAS OHLSON AS

[Edit participant](#) [Delete participant](#)

### Organization

**ICD** NO:ORGNR (9908)  
**Identifier** 937402198  
**Name** CLAS OHLSON AS

### Endpoint

**Endpoint** [Pagero AB](#)  
**Registration date** 23.05.2018

### Contact person

**Name**  
**Phone number**  
**Email** [oscar.abrahamsson@clasohlson.se](mailto:oscar.abrahamsson@clasohlson.se)

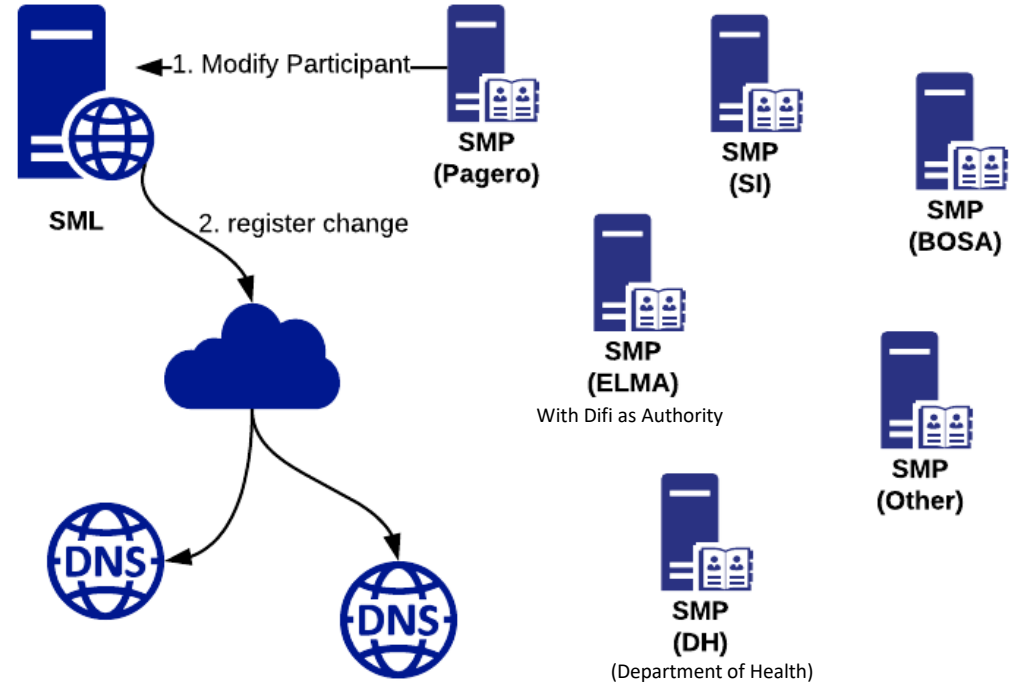
### Profiles

[BIS04 V2 - PEPPOL BIS Invoice 2.0 \(Profile 04A\)](#)  
[BIS05 V2 - PEPPOL BIS Billing 2.0 \(Profile 05A\)](#)  
[EHF\\_CREDITNOTE 2.0 - EHF Creditnote 2.0 \(Profile XXA\)](#)  
[EHF\\_INVOICE 2.0 - EHF Invoice 2.0 \(Profile 04A\)](#)  
[EHF\\_INVOICE\\_CREDITNOTE 2.0 - EHF Invoice and Creditnote 2.0 \(Profile 05A\)](#)

# Elements in PEPPOL

## SML - Central Registration System for Addressing

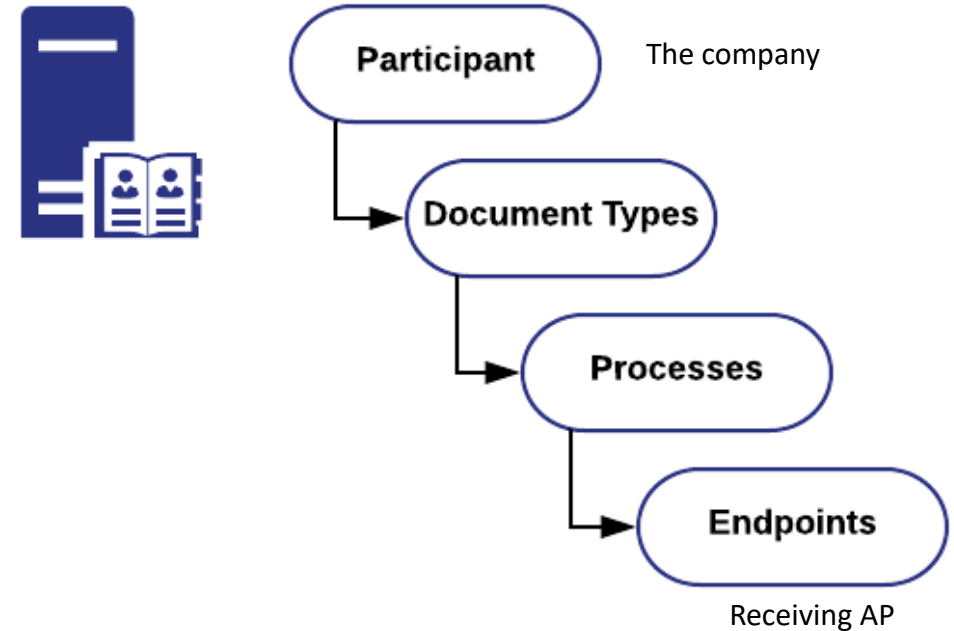
- Central component in PEPPOL
- Register Participants in DNS
- Identifies approved SMPs and APs
- Supports test infrastructure with SMK (=SML for testing).



# Elements in PEPPOL

## SMP – Service Metadata Publisher

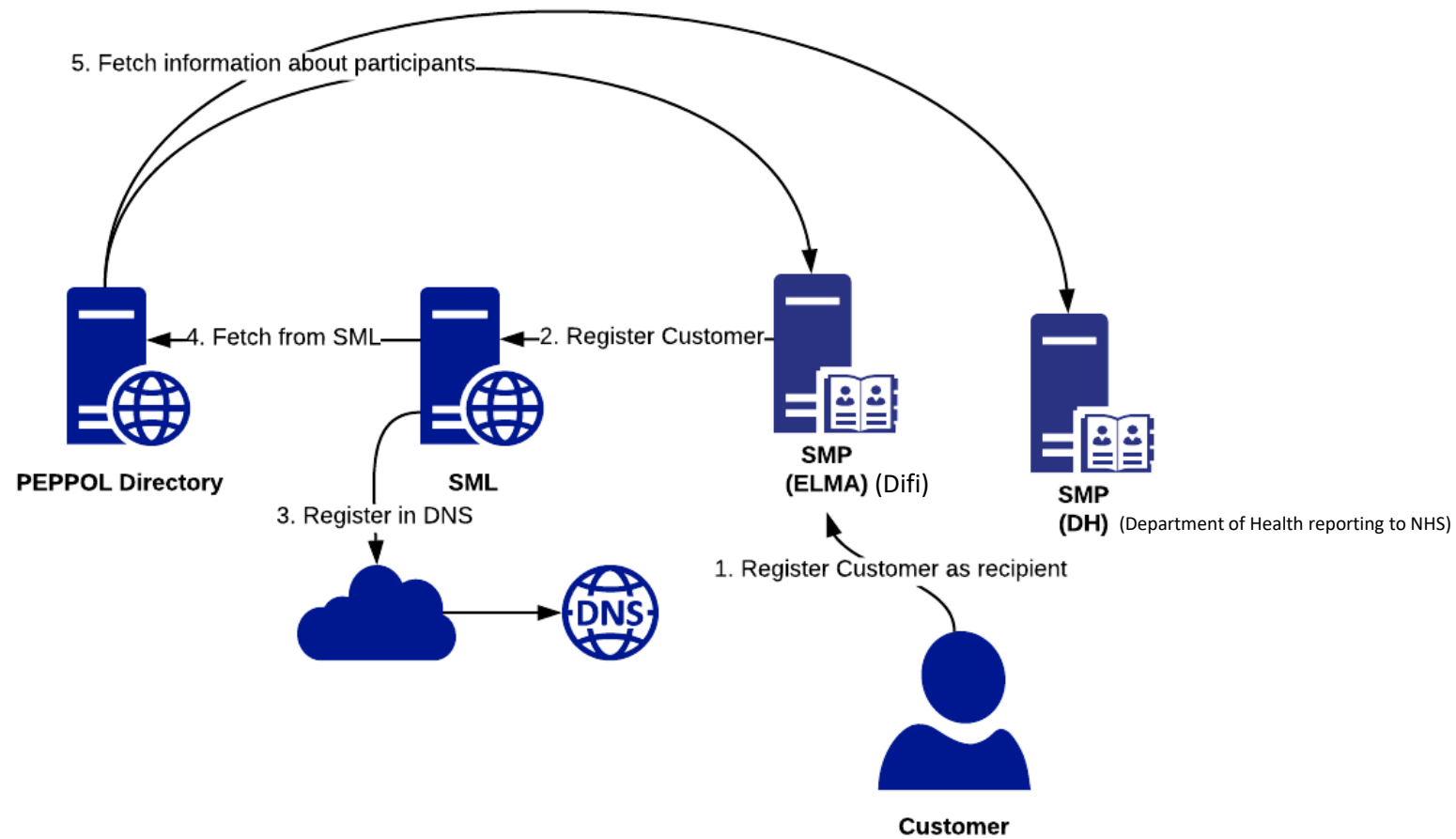
- Participant Registry in PEPPOL
- Multiple SMP's in the PEPPOL infrastructure.
- Several PEPPOL Authorities demand use of their national SMP.  
(e.g. Difi as Authority requests use of ELMA in Norway)
- No standard API when updating participants in SMP.
- Changes to document types and endpoint information needs to be updated for all participants in all SMPs.





# Elements in PEPPOL

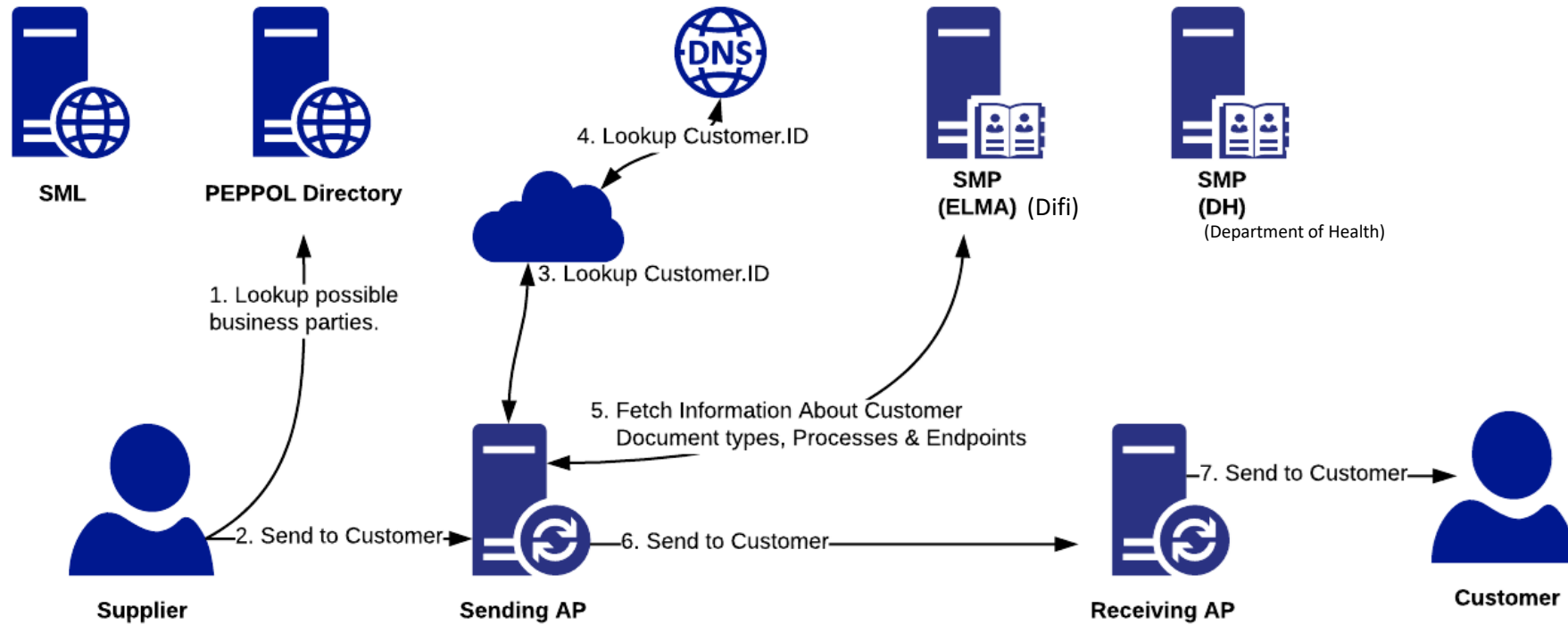
## Register participant



DNS = Domain Name System

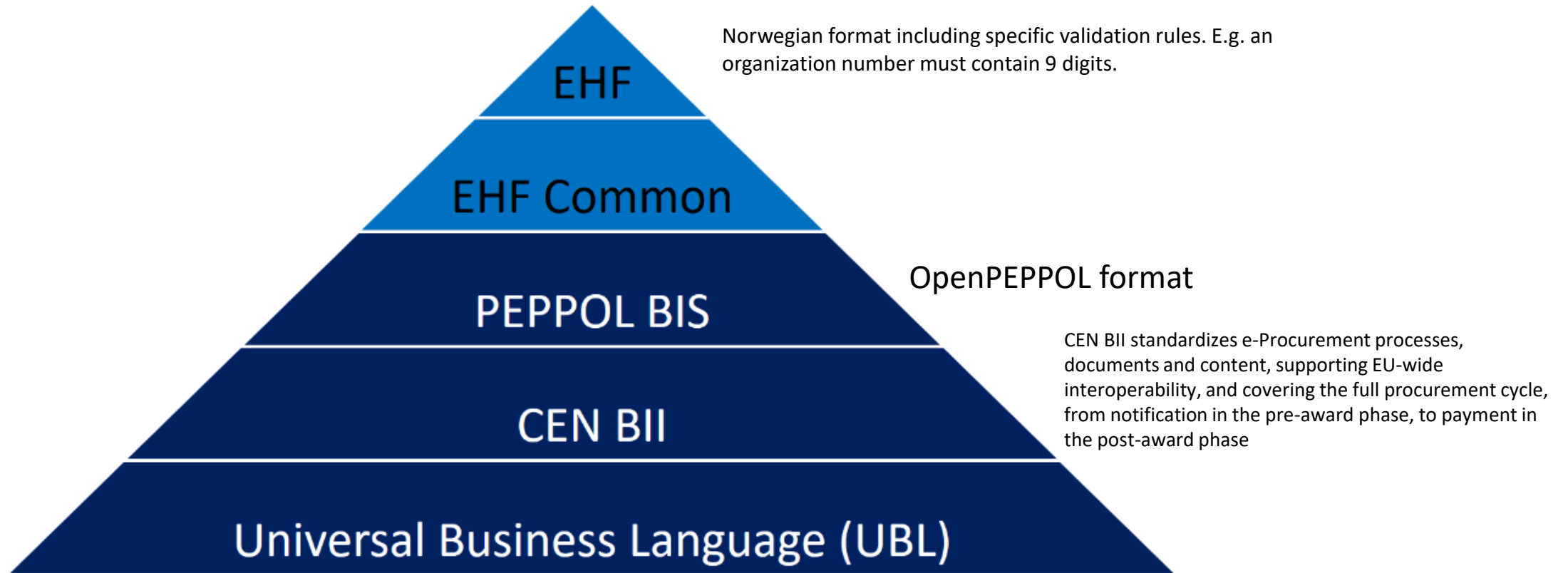
# Elements in PEPPOL

## Send document



# Elements in PEPPOL

## Format and Validation



# The PEPPOL Landscape

---

## PEPPOL Authorities

PEPPOL Authorities exists in the following countries:

- Difi (Norway) [with ELMA required as SMP]
- ESV (Sweden)
- ERST (Denmark)
- Simpler Invoicing (Netherlands)
- NHS (UK)
- BOSA (Belgium)
- AGID (Italy)
- Ministry of Economics Division (Poland)
- IMDA (Singapore)
- Office of Government Procurement (OGP) (Ireland)
- KOSIT (Germany)

# The PEPPOL Landscape

---

Who is conformant

Who is conformant according to BIS 2 Syntax:

- Sweden use PEPPOL BIS 2.0
- Belgium, but not conformant to the delivery process
  - Require manual tests
  - Validates and rejects inbound documents
- Poland, not really started yet
- Singapore, not really started yet

# The PEPPOL Landscape

---

Who is not conformant yet..

Who is not conformant according to BIS 2 Syntax:

- Norway (EHF)
- Denmark (OIO)
- Netherland (SI)
- UK (New Order and OrderResponse published)
- Italy



# PEPPOL

---

## Infrastructure

- Even though PEPPOL has become a mature network the infrastructure is still undergoing lots of changes.
  - Security enhancements in communication protocols
  - Certificate Infrastructure
  - Changes within existing communication protocols
  - Introduction of new communication protocols
  - Introduction of new PEPPOL authorities with new requirements
    - New document types
    - Requirements to the use of specific SMPs requiring integration that is not standardized within PEPPOL.

# PEPPOL Access Points

---

Reach is imperative

- Reaching **all** existing PEPPOL authorities is a strength (*there are differences...*)
  - Comply with requirements in technology
  - Comply with requirements in tax regulations and validation artefacts
  - Routines and contacts when working with the different PEPPOL authorities
- Knowledge and experience in cross border traffic is a benefit for the next phase
- Support global business ID's is important to take in to consideration

# PEPPOL

---

## Business Process (from SMP)

- Support the most common document types, to handle various business processes
  - Catalogue
  - Order
  - Order Response
  - Despatch Advice
  - Invoice
  - Invoice Response
  - Payment
- Order Change & Order Cancellation support being implemented

# PEPPOL

---

## Document Syntaxes

- PEPPOL is still undergoing a lot of changes in the format syntaxes -> requiring investments in both resources and time to stay compliant.
- New format syntax versions are introduced regularly
  - Successfully moved all customers from BIS version 1 to version 2. (...3)
  - Help customers identifying compliance issues before transition.
    - Automatically monitor issues followed by report
    - Help customers with enrichment when they are not capable of delivering the required content themselves
  - Experienced integration department securing quality in transformations
- Need to update all participants in different SMP's with non-standardized API's when mandatory BIS format versions are introduced. In ELMA manual login is required.

# PEPPOL

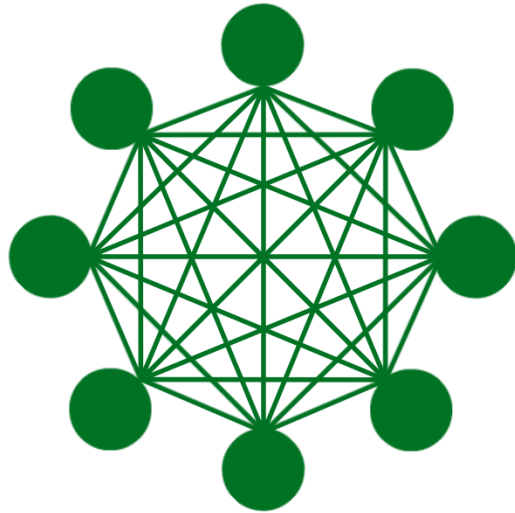
---

## Document Syntaxes – lessons learned

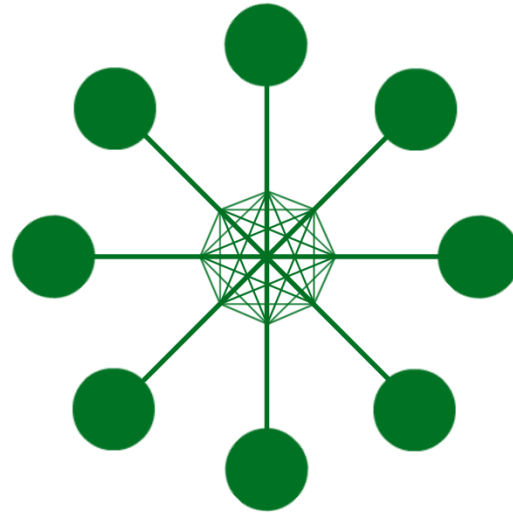
- Different PEPPOL Authorities might have extensions to the PEPPOL BIS documents.
  - PEPPOL BIS Version 3 might decrease the number of country specific versions.
  - Will most likely still exist within Europe and in new countries joining PEPPOL outside of Europe.
- It is important to offer a sophisticated and always up to date validation engine of the format that
  - Supports the standard PEPPOL BIS
  - Supports extended format syntaxes
  - *Basically a validation of the format that is received from the SMP*
- Certain customers or ERP systems do not have the capability to stay updated with all the changes in format syntaxes, validations and infrastructure.
  - Necessary to ensure backwards compatibility between versions for partners and customers.

# Challenge #1: Network vs point-to-point

Network Evolution



Point-to-point



Few-to-few



Many-to-many



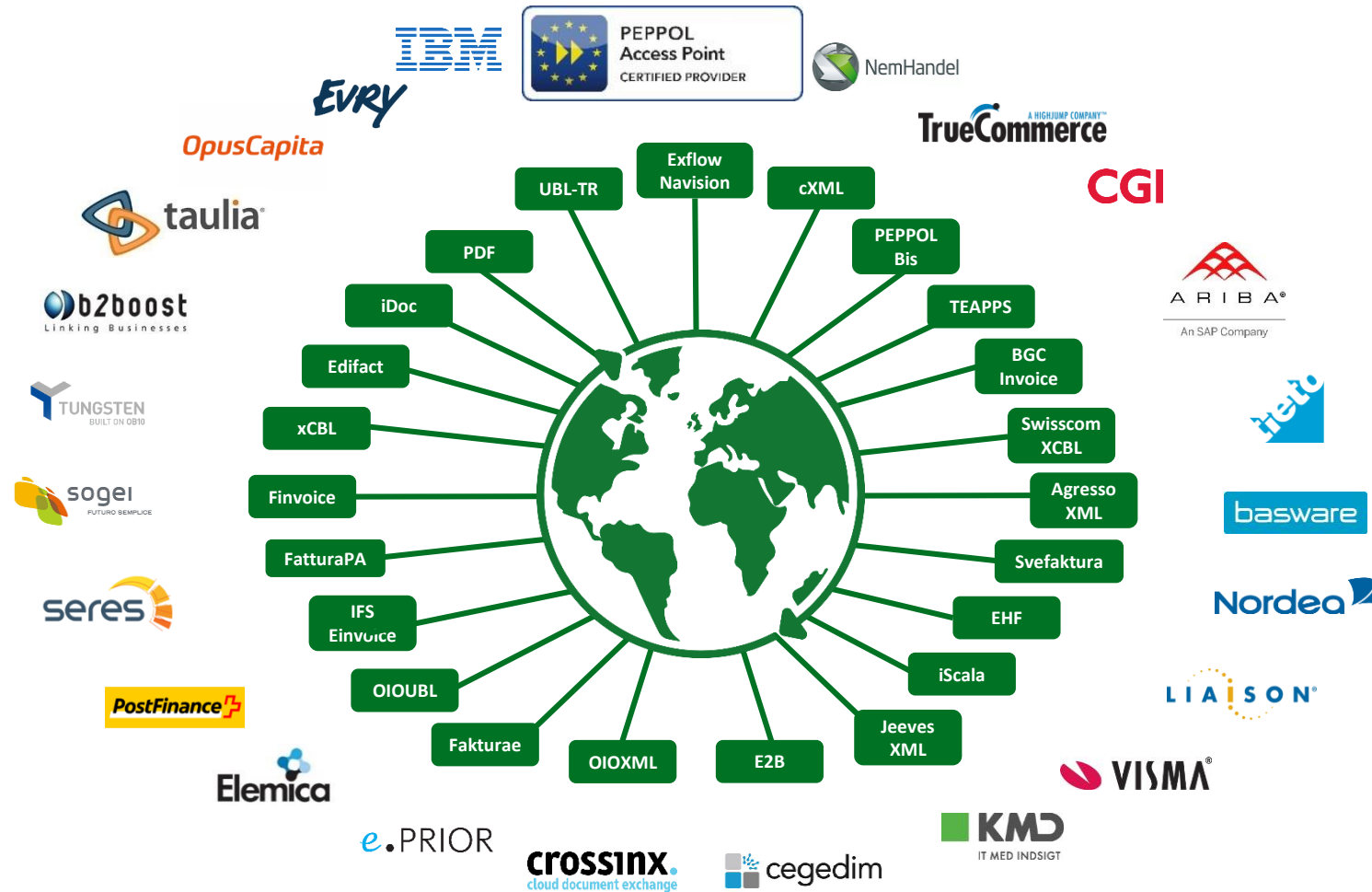
# Challenge #2: Electronic transaction (B2G)

## Countries

NOW		SOON		LATER	
	Austria		Italy		Germany
	UK		Portugal		Czech Republic
	Spain		Norway		Ireland
	Sweden		Slovenia		Lithuania
	Turkey		Denmark		
	Switzerland		Finland		
	France		Singapore		
			Canada		
			Belgium		
			Netherlands		
			Poland		
			Estonia		
			Iceland		
			USA		

# Challenge #3-4: Multitude of Formats and Service Providers

Our World (B2G and B2B)



# Value Added Services

## HANDLE YOUR ENTIRE FLOW VIA ONE CHANNEL



PDF invoice via email



Pagero Data Capture



External Print



E-reminders

## MINIMISE MANUAL ERROR HANDLING



Validation



Enrichment

## FULFIL AUDITOR- AND GOVERNMENT'S DEMANDS



E-archive



Digital signature



Extended reports

## HANDLE MULTIPLE COMPANIES OR A GROUP STRUCTURE



Multi-company support



E-netting



Payment Online

## ACCURATE SPEND MANAGEMENT



Contract Lifecycle Management



Validation and Deviation handling



Dashboard



Statistics Service

# PEPPOL

---

## PEPPOL & B2B Commerce – Knowledge

- High overall knowledge of PEPPOL ensures proper on-boarding.
- Active membership within the PEPPOL organization and in different work groups is key for knowledge, co-operation and success.
- A Service Provider (SP) can help you reach PEPPOL Access Points and also facilitate B2B commerce – globally.

**Thank you!**

[jonas.edlund@pagero.com](mailto:jonas.edlund@pagero.com)

[karan.shankar@pagero.com](mailto:karan.shankar@pagero.com)

**PAGERO**

© Pagero AB 2018