



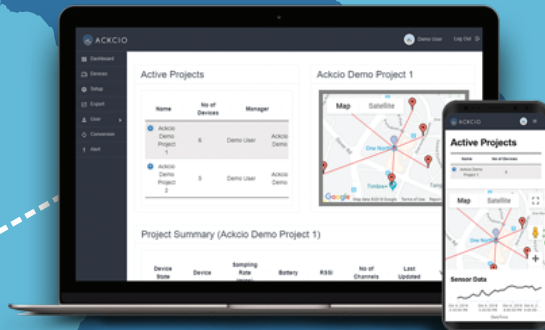
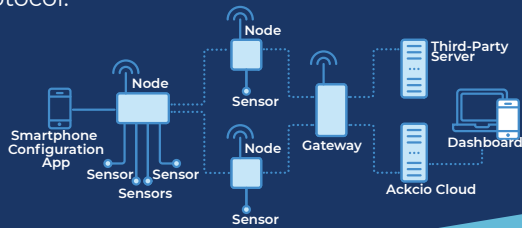
ACKCIO

Ackcio Beam is an end-to-end solution that automates the process of monitoring geotechnical and structural sensors in challenging environments like construction sites and mines.

www.ackcio.com

The solution is built upon three main components: Ackcio Devices, Ackcio Mesh and Ackcio Software.

Ackcio Nodes connect with geotechnical and structural sensors and transmit their data to the Ackcio Gateway using Ackcio Mesh, a patent-pending long-range wireless mesh communication protocol.



Ackcio Software helps you to configure the devices and manage your data.



SG:D | SPARK