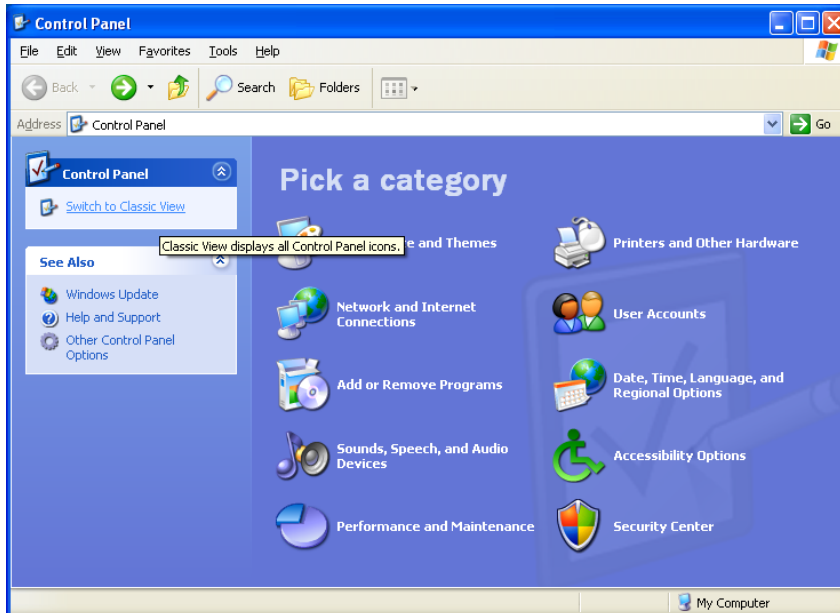


Seamless and Secure Access (SSA) Manual Configuration Guide for Windows XP

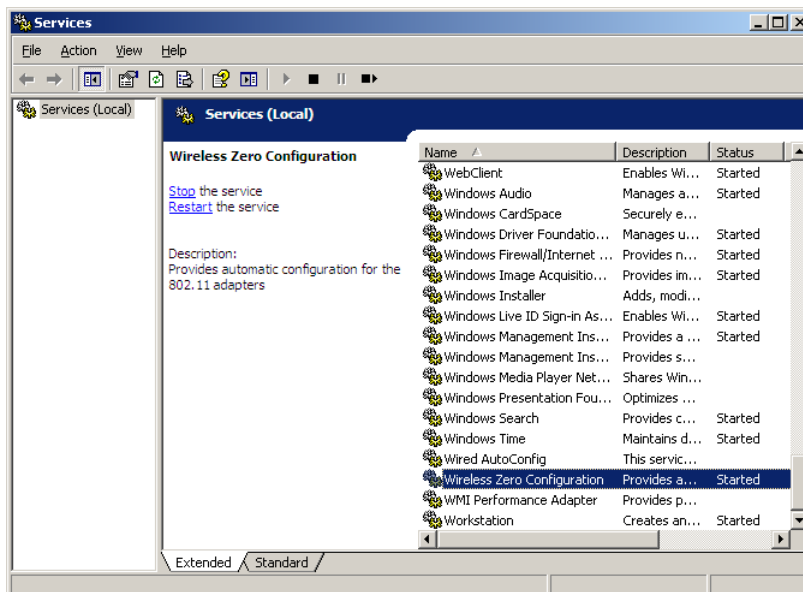


1 Enable Wi-Fi

- a) Please refer to your computer's user manual to enable the Wireless (Wi-Fi) connection.
- b) Please click **Switch to Classic View** in the Control Panel before following the instructions in this user guide.



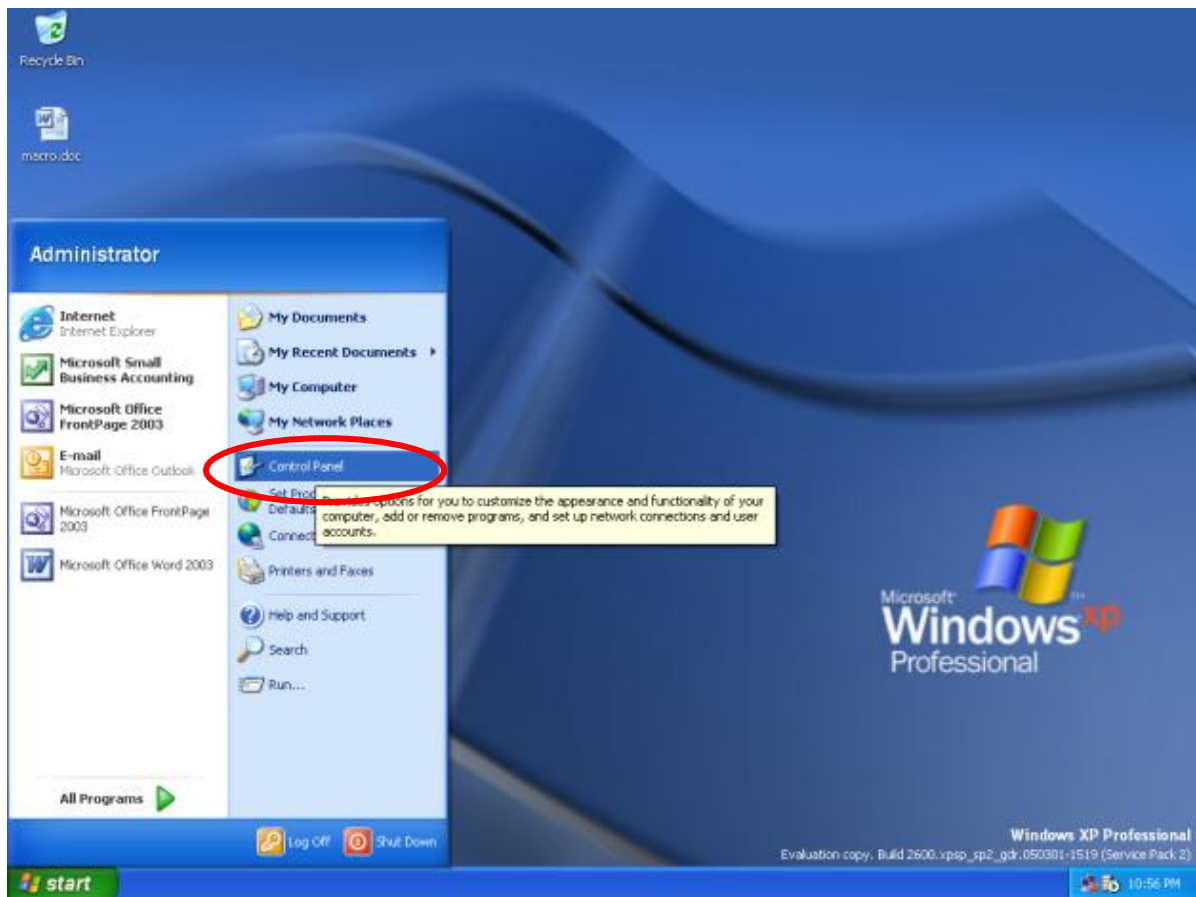
- c) Click **Start** and then select **Control Panel**. In **Control Panel**, select **Administrative Tools**. In **Administrative Tools**, click **Services** and scroll to the bottom and make sure the **Wireless Zero Configuration** service is started.



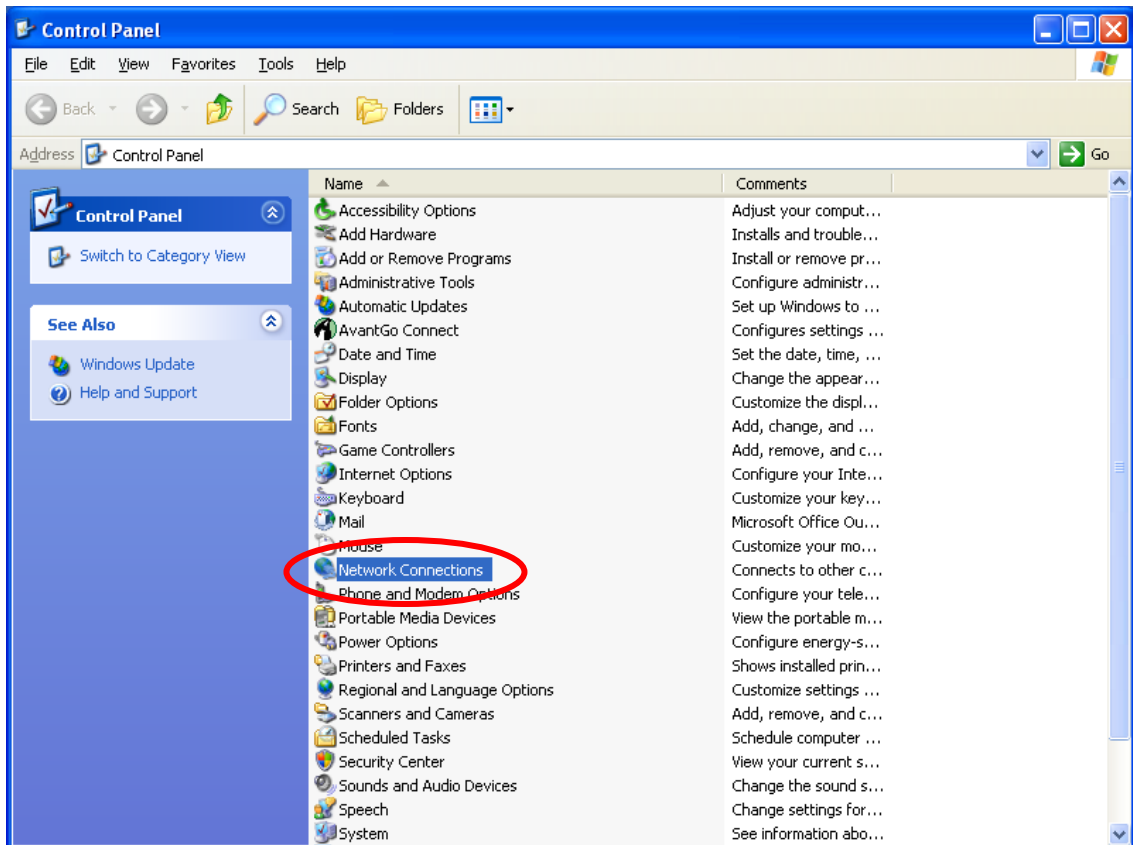
Note: If you are using a third-party Wi-Fi manager, e.g., Intel PROSet, ThinkVantage Access Connections, etc., please disable it before following the instructions in this guide. Alternatively, you may use the third-party Wi-Fi manager to configure the settings stated in this guide. If you need help to use your third-party Wi-Fi manager, please refer to the instruction manual provided by the manufacturer.

2 Connect to Wireless@SG via SSA

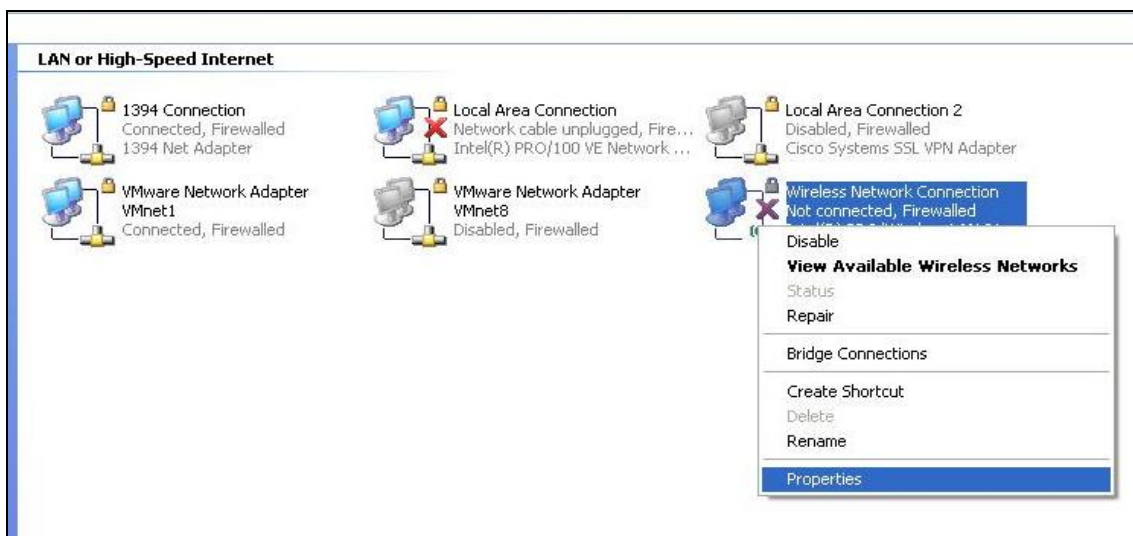
- a) Click **Start** and select **Control Panel**.



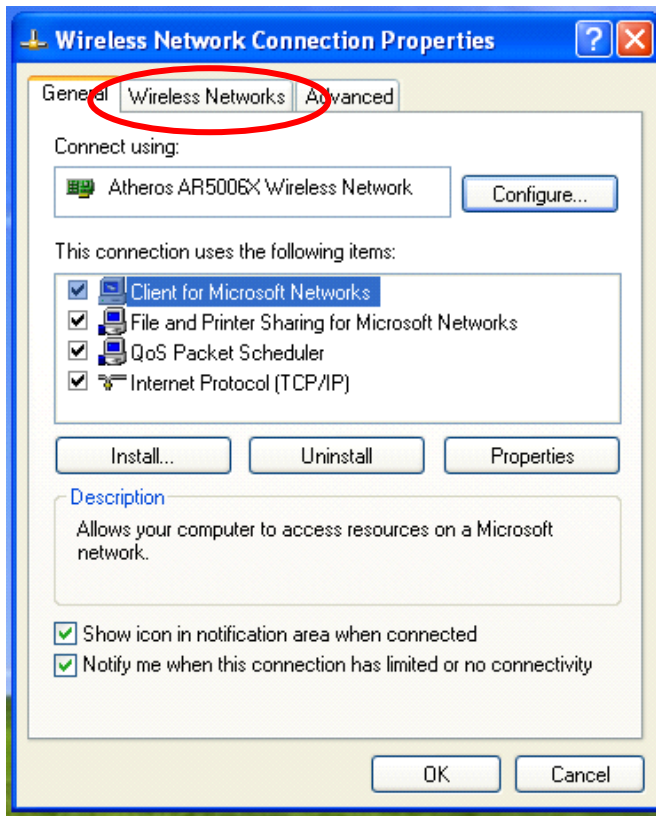
b) In **Control Panel**, select **Network Connections**.



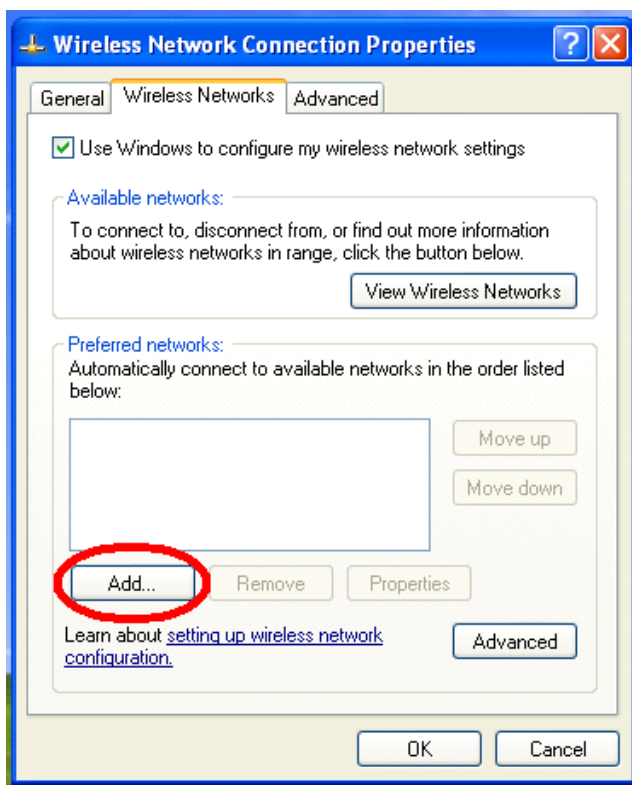
c) Right-click **Wireless Network Connection** and select **Properties**.



d) Click on the **Wireless Networks** tab.

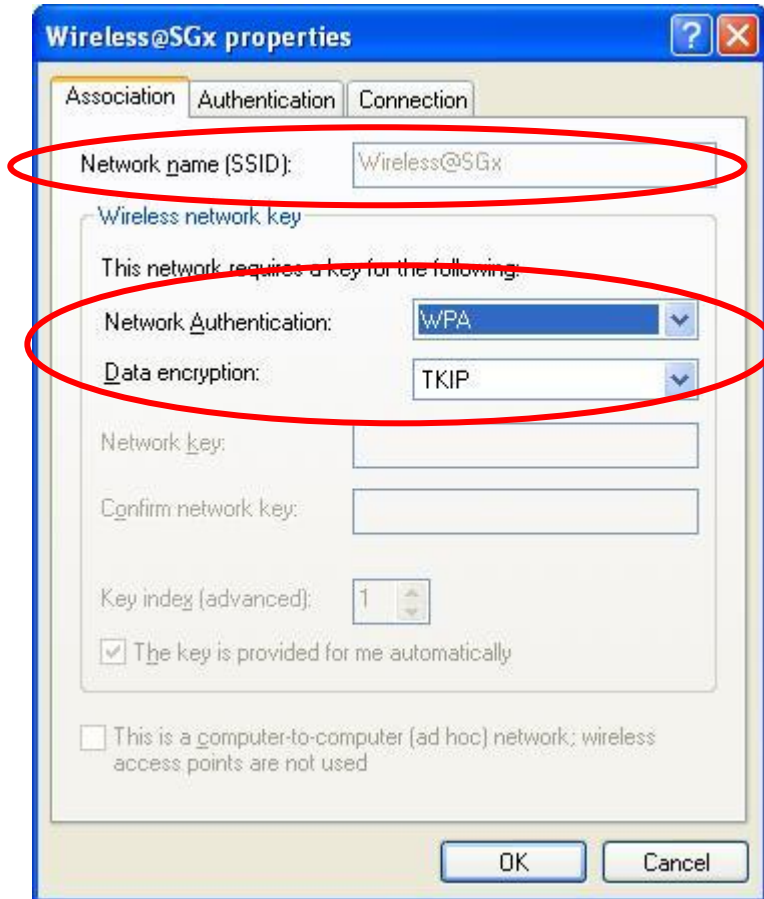


e) At the **Wireless Networks** tab, click **Add...**



f) Configure the **Association** tab as follows:

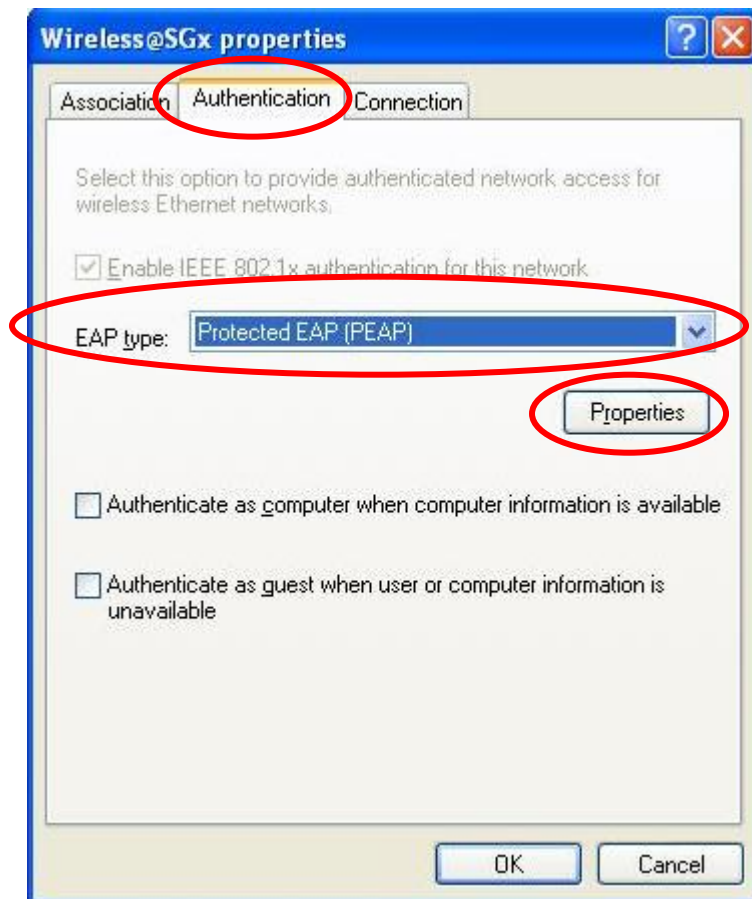
- **Network name (SSID):** Wireless@SGx.
- **Network Authentication:** WPA.
- **Data encryption:** TKIP



g) Configure the **Authentication** tab as follows:

- EAP type: Protected EAP (PEAP)

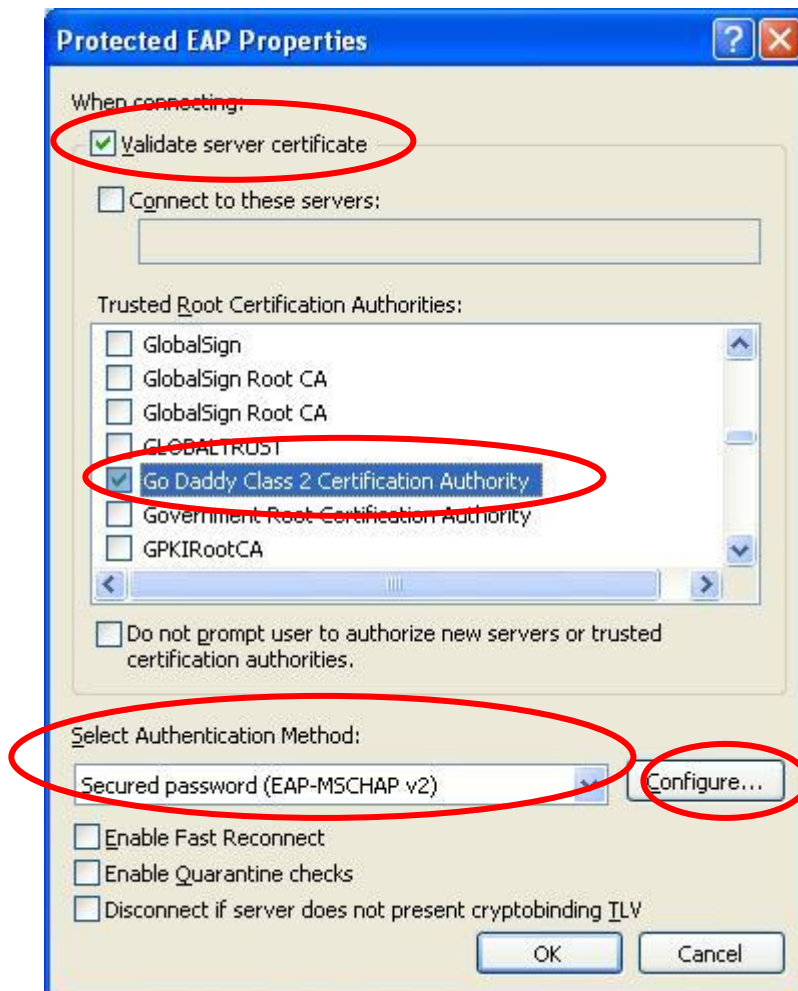
Click on the **Properties** button



h) Configure the following Protected EAP Properties:

- **Validate server certificate:** Check
- **Trusted Root Certification Authorities:** Go Daddy Class 2 Certification Authority.
Note: If you cannot find Go Daddy Class 2 Certification Authority under Trusted Root Certification Authorities, go to <http://support.microsoft.com/kb/931125> to download and install the Root Certificates update.
- **Select Authentication Method:** Secured password (EAP-MSCHAP v2).
- **Enable Fast Reconnect:** Uncheck

Click on **Configure...**



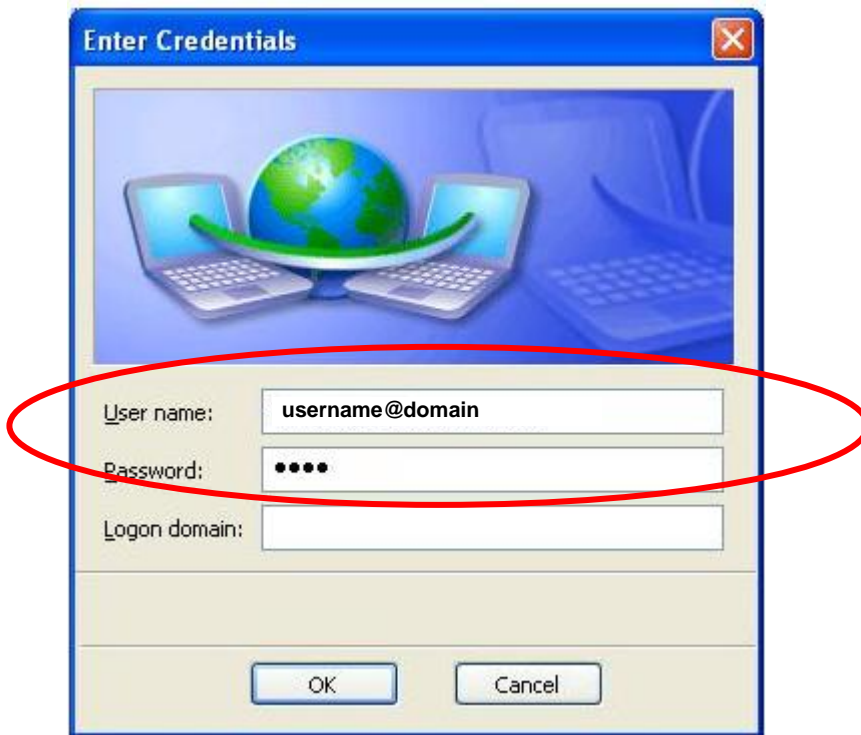
i) Uncheck **Automatically use my Windows logon name and password** (and domain if any)



- j) Click **OK** and **OK** again to return to **Control Panel**. Close **Control Panel** and return to the Windows desktop.
- k) After configuration, a popup will appear over the taskbar. Click on the popup and a login screen will appear.



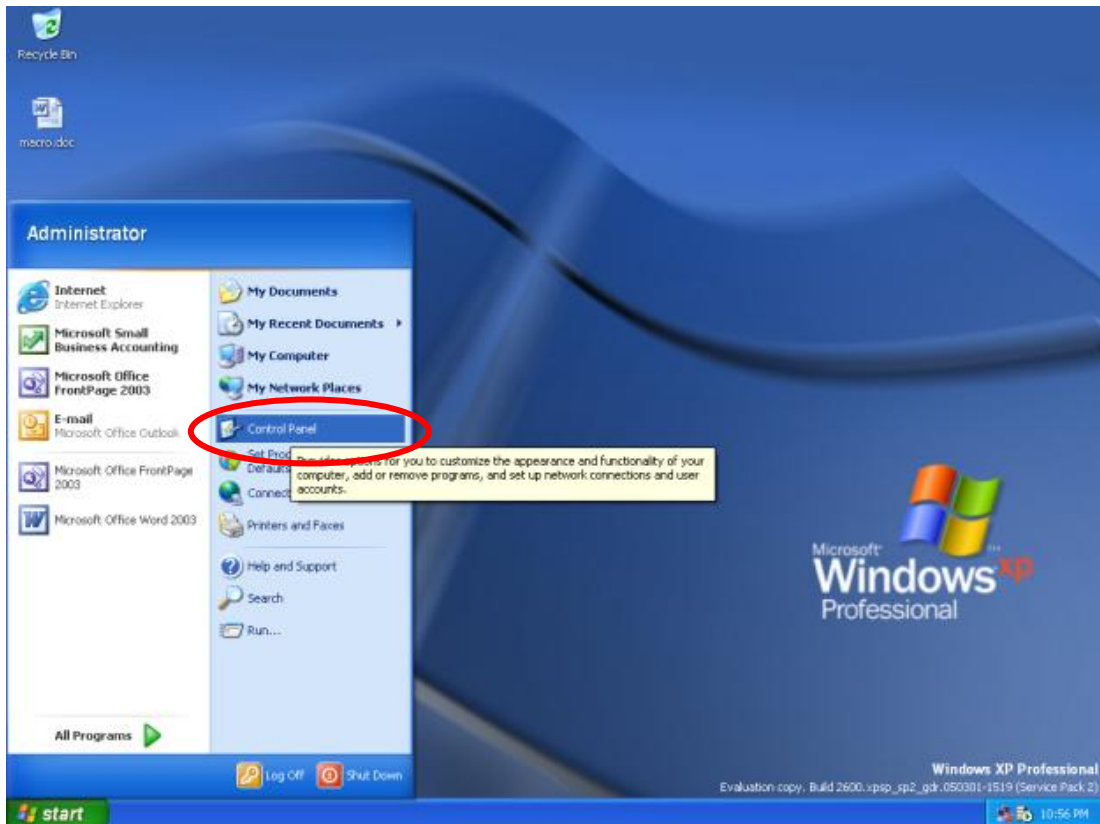
- l) In the **User name** box, enter your Wireless@SG username followed by @domain format. In the **Password** box, enter your Wireless@SG password. Leave the **Logon domain** box empty.



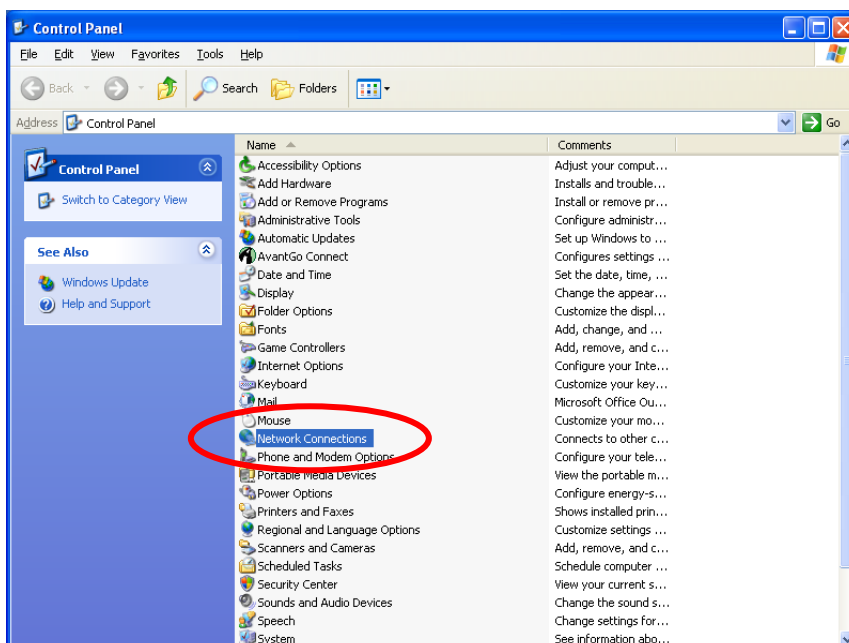
3 Uninstall SSA profile

Follow the steps below to remove the Wireless@SGx settings:

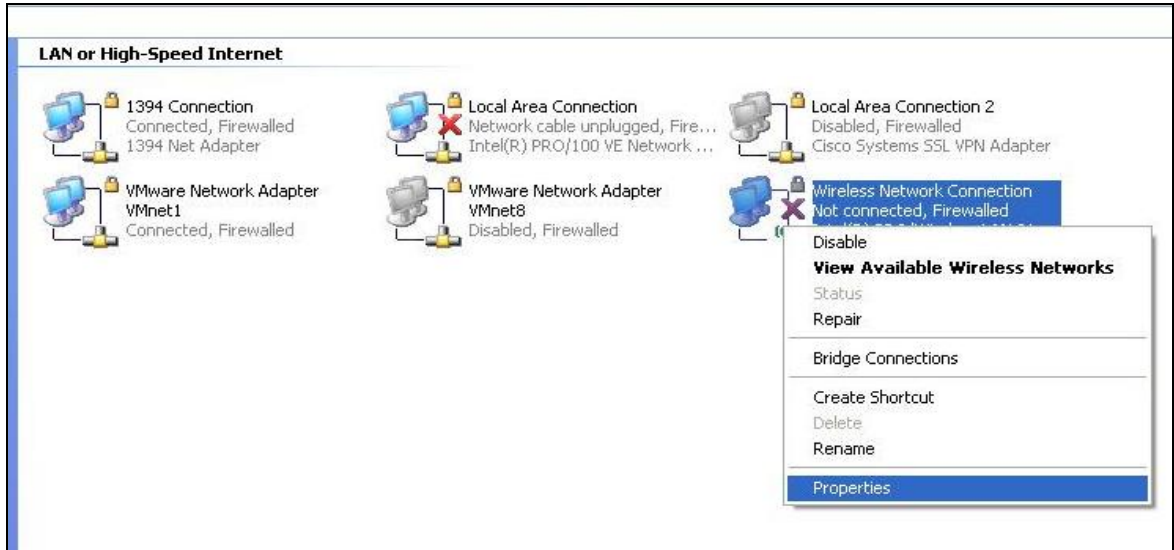
- a) Click **Start** and then select **Control Panel**.



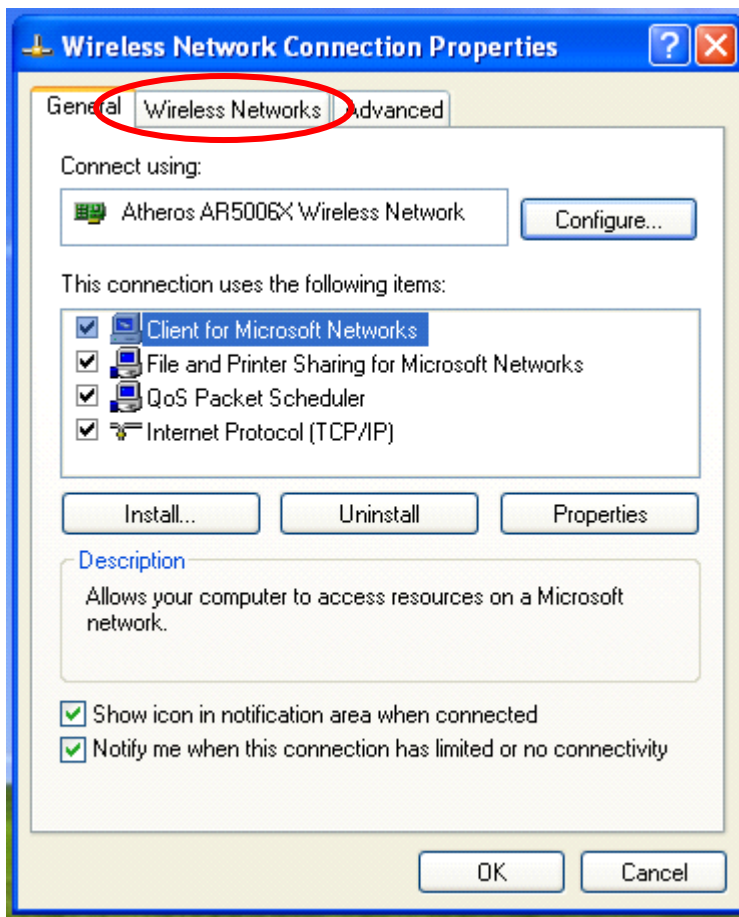
- b) In **Control Panel**, select **Network Connections**.



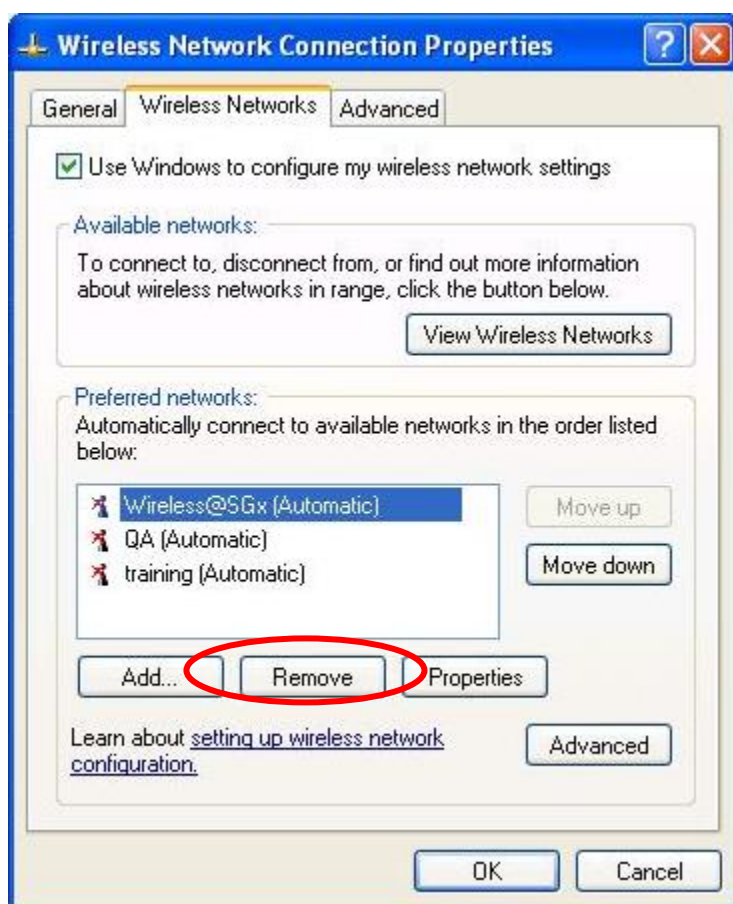
c) Right-click **Wireless Network Connection** and select **Properties**.



d) Click on the **Wireless Networks** tab.



- e) Click on **Wireless@SGx** in the Preferred Network box and click the **Remove** button.



- f) Click **OK** to close the Wireless Network Connection Properties window.