

# **Seamless and Secure Access (SSA) Manual Configuration Guide for Windows Vista**

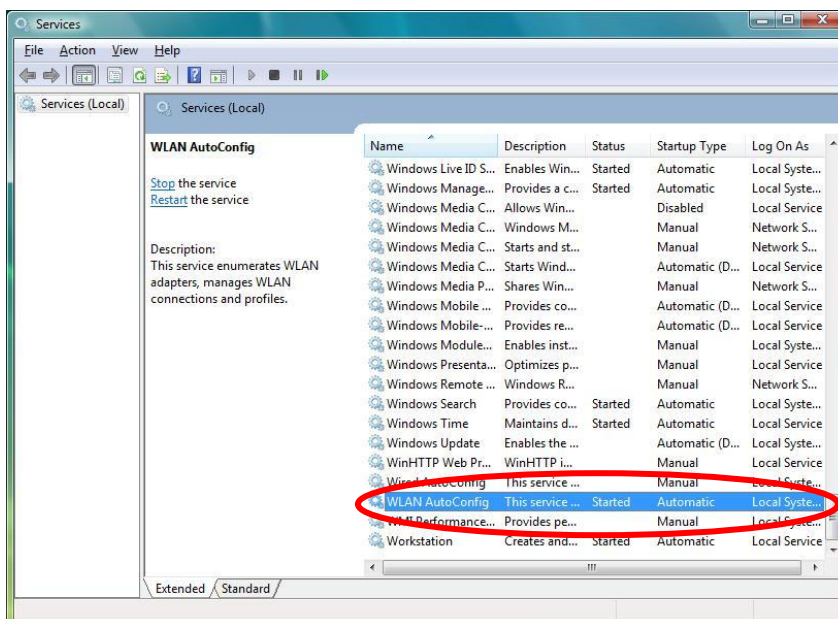


# 1 Enable Wi-Fi

- a) Please refer to your computer's user manual to enable the Wireless (Wi-Fi) connection.
- b) Please click on **Classic View** in the Control Panel to follow the instructions in this guide.



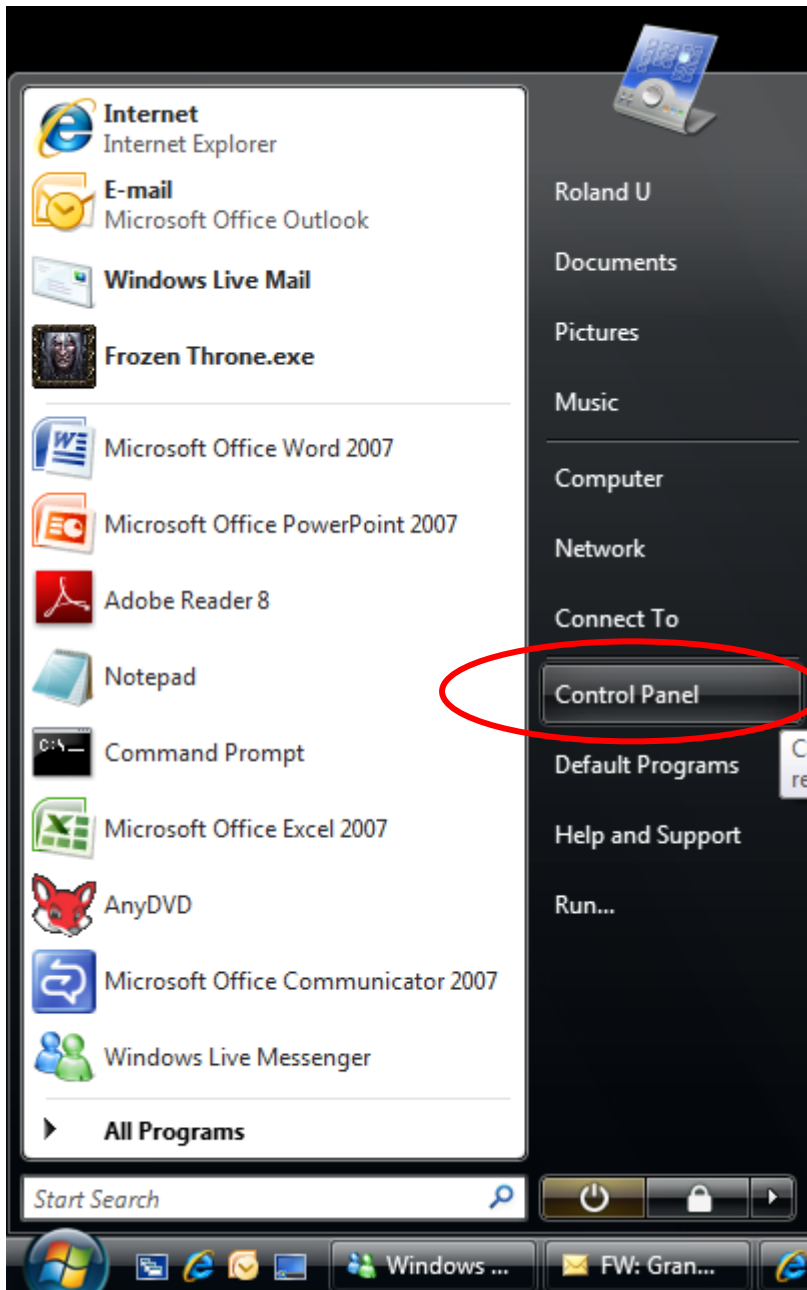
- c) Click **Start** and select **Control Panel**. In **Control Panel**, click on **System and Maintenance** and then click on **Administrative Tools**. In **Administrative Tools**, click **Services** and scroll to the bottom and make sure the **WLAN AutoConfig** service is started.



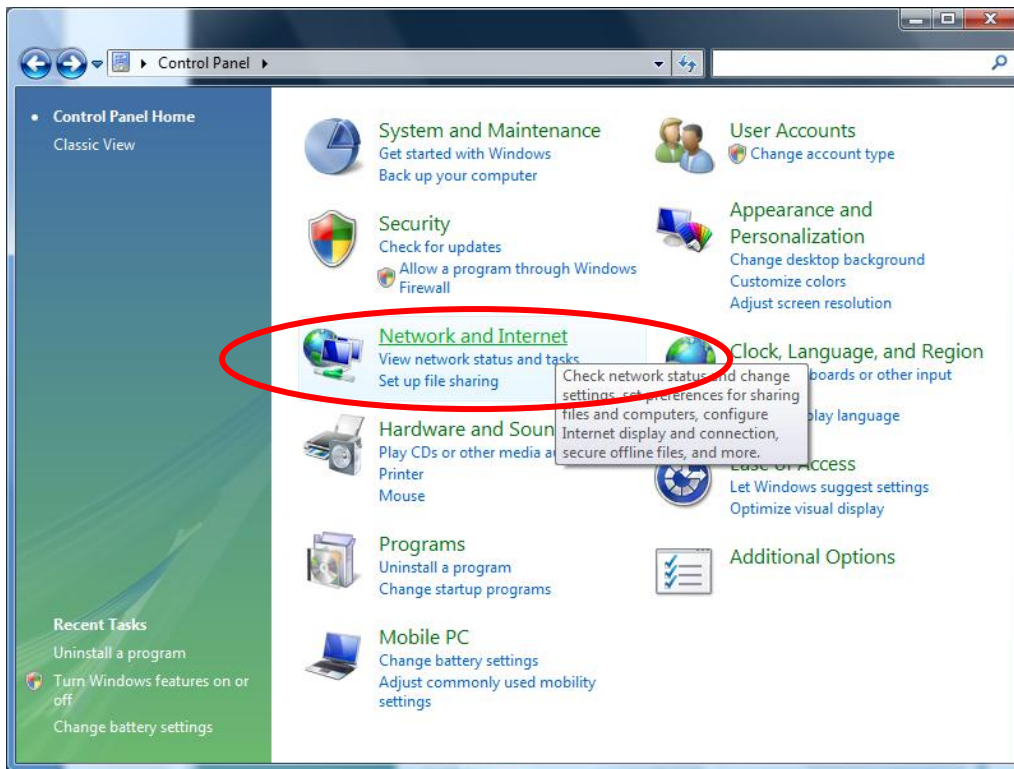
**Note:** If you are using a third-party Wi-Fi manager, e.g., Intel PROSet, ThinkVantage Access Connections, etc., please disable it before following the instructions in this guide. Alternatively, you may use the third-party Wi-Fi manager to configure the settings stated in this guide. If you need help to use your third-party Wi-Fi manager, please refer to the instruction manual provided by the manufacturer.

## 2 Connect to Wireless@SG via SSA

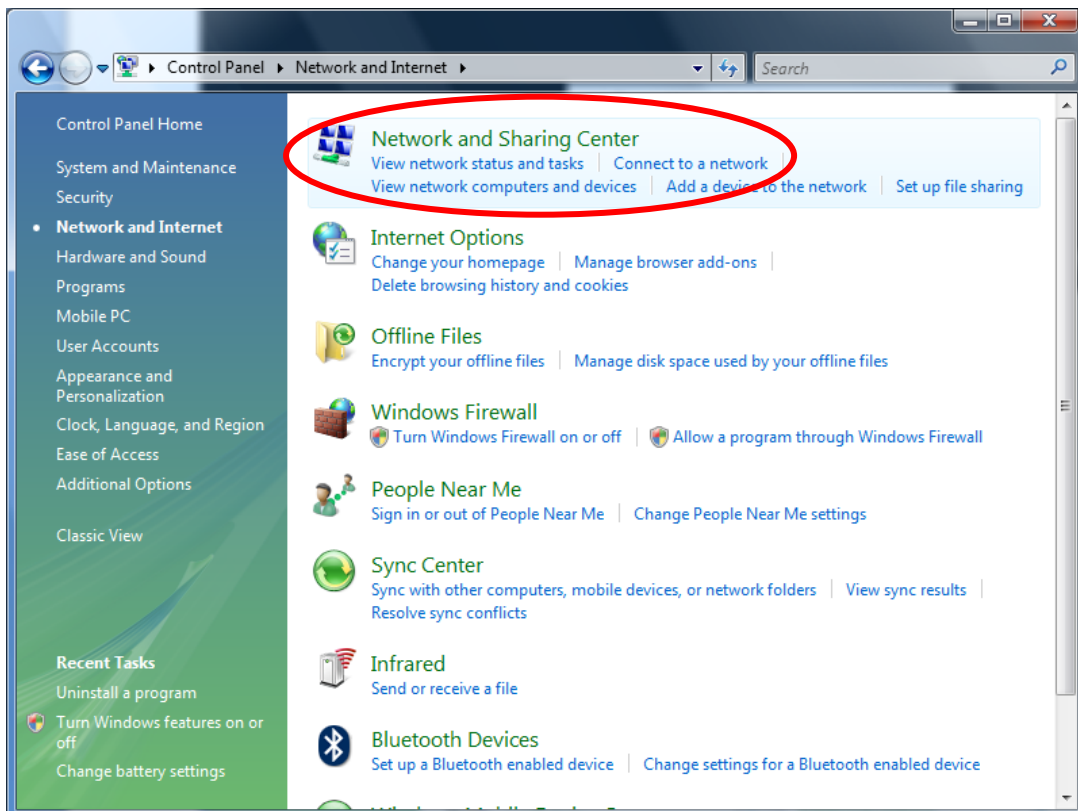
- a) Click on **Start** and select **Control Panel**.



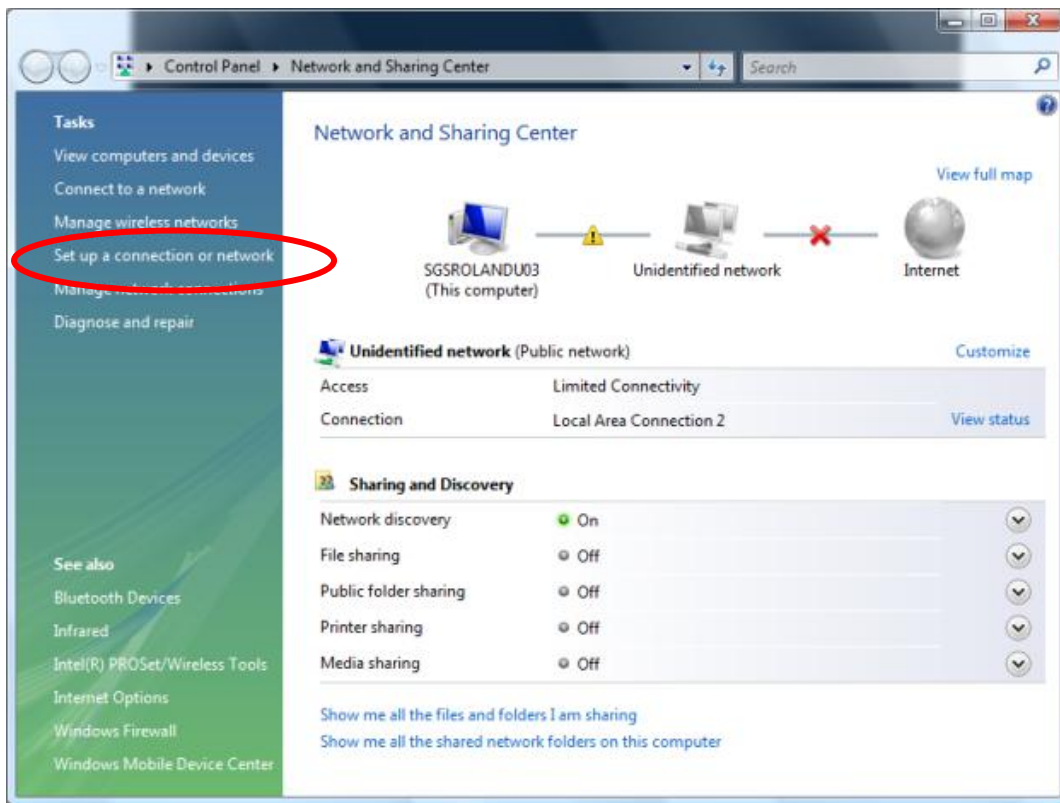
b) Select **Network and Internet**.



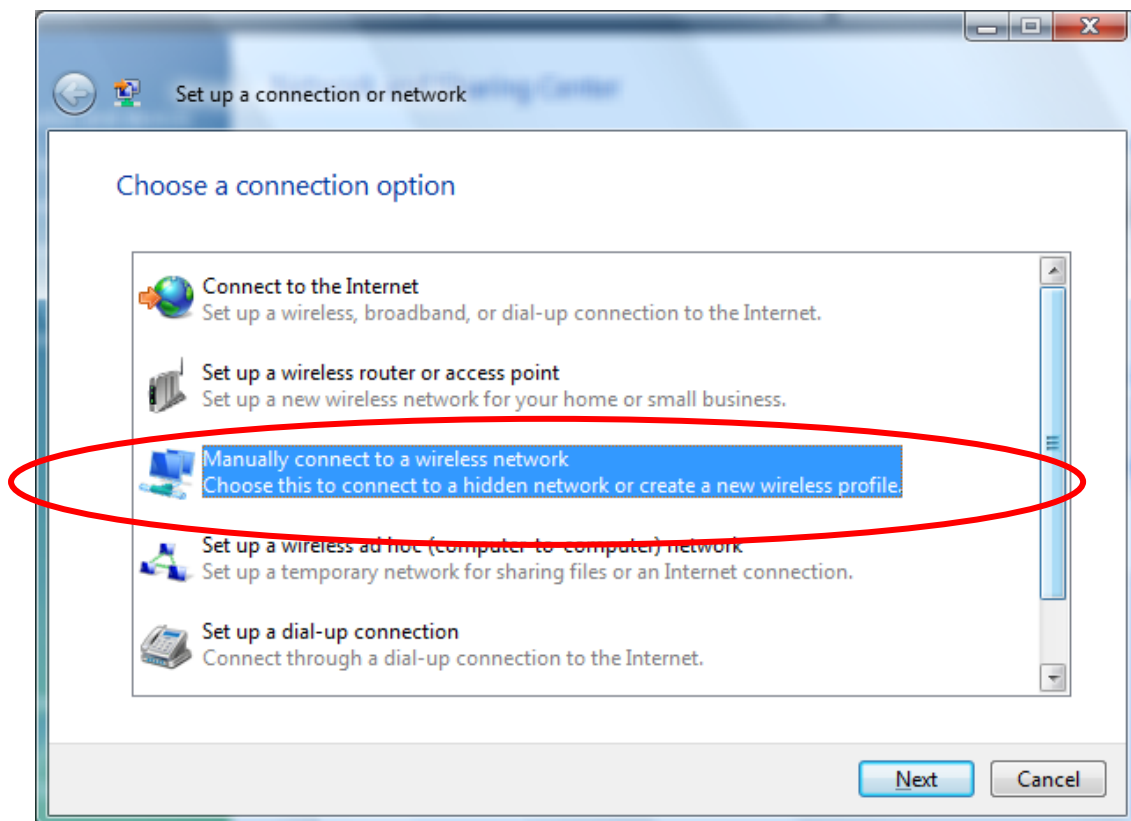
c) Select **Network and Sharing Center**.



d) Click on **Set up a connection or network**.



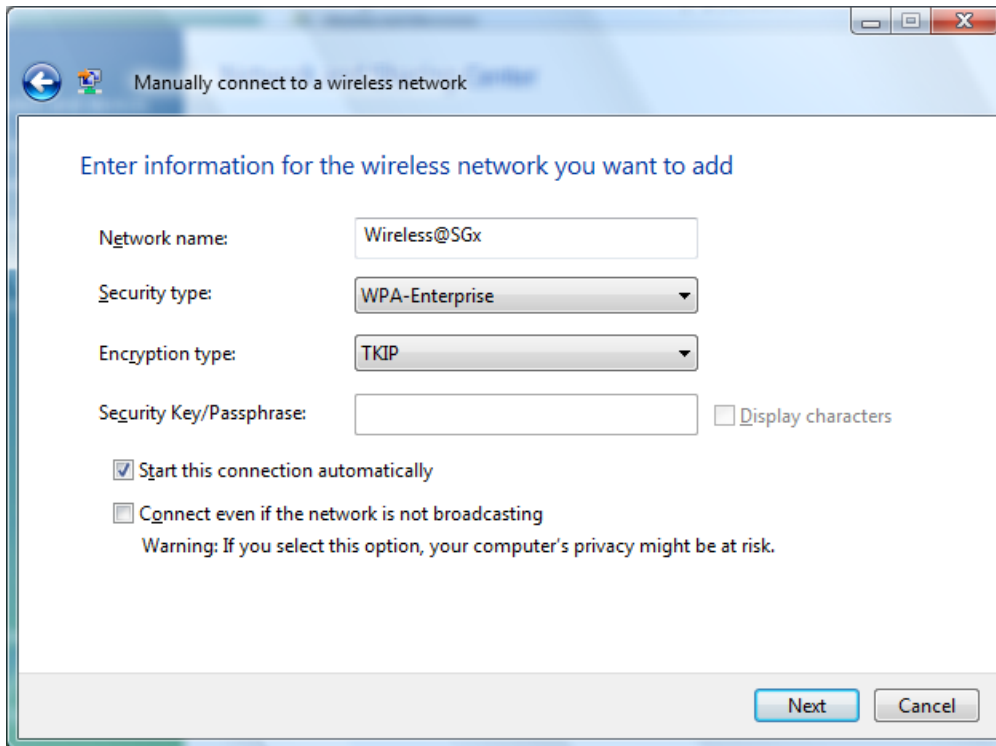
e) Select **Manually connect to a wireless network** and click **Next**.



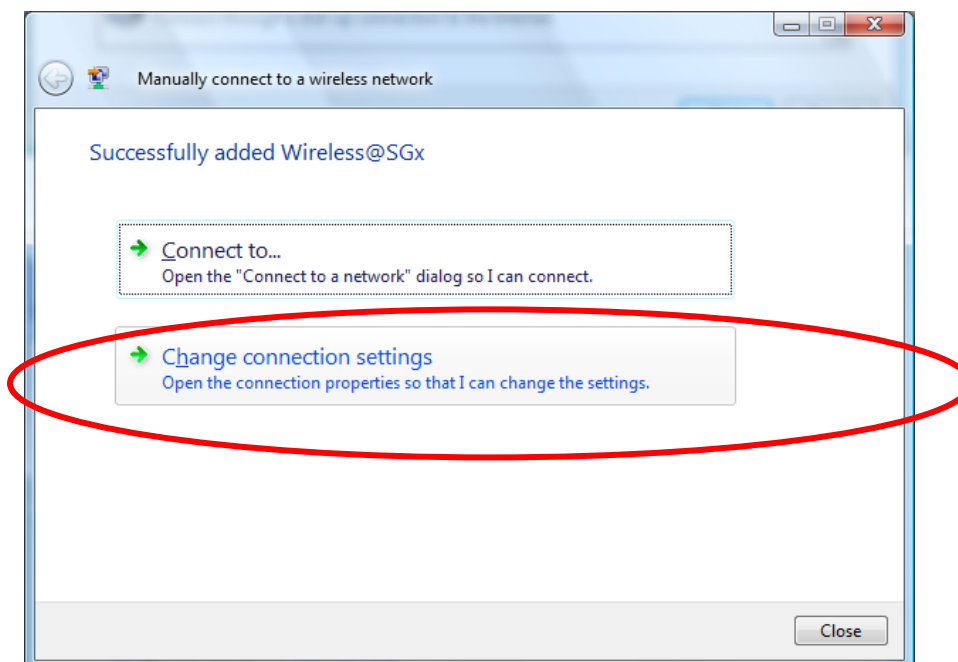
f) Enter the following information:

- **Network name:** Wireless@SGx
- **Security type:** WPA-Enterprise
- **Encryption type:** TKIP
- **Start this connection automatically:** Check

Click on **Next**



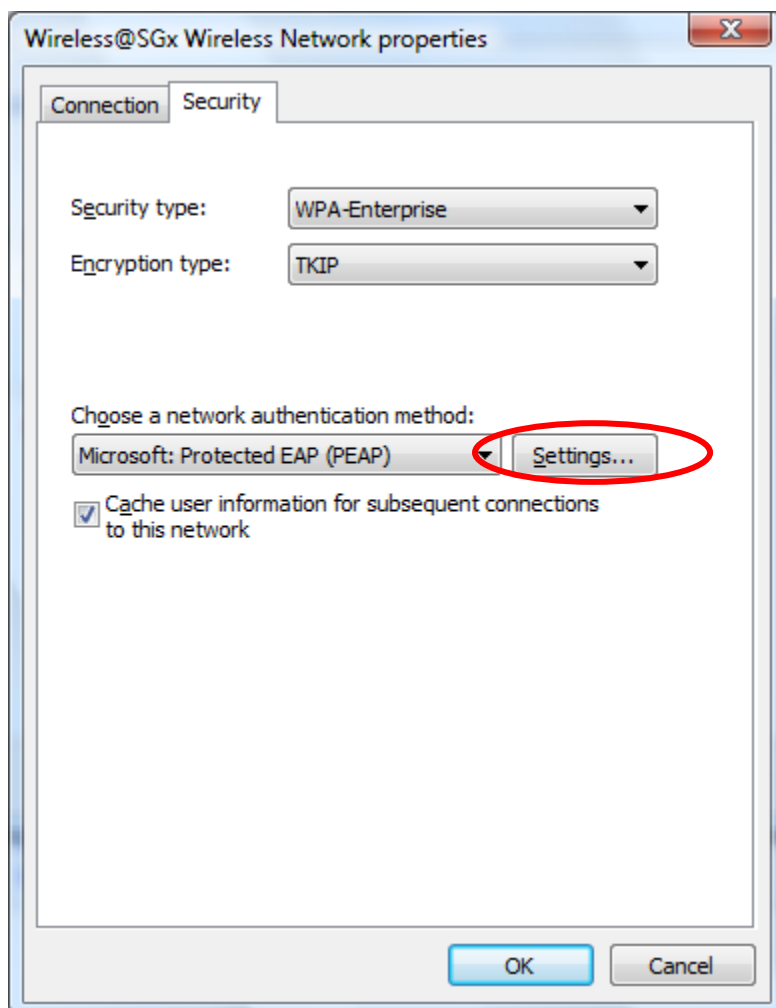
g) Click on **Change connection settings**.



h) Configure the following settings:

- **Choose a network authentication method:** Microsoft: Protected EAP (PEAP).
- **Cache user information for subsequent connections to this network:** Check.

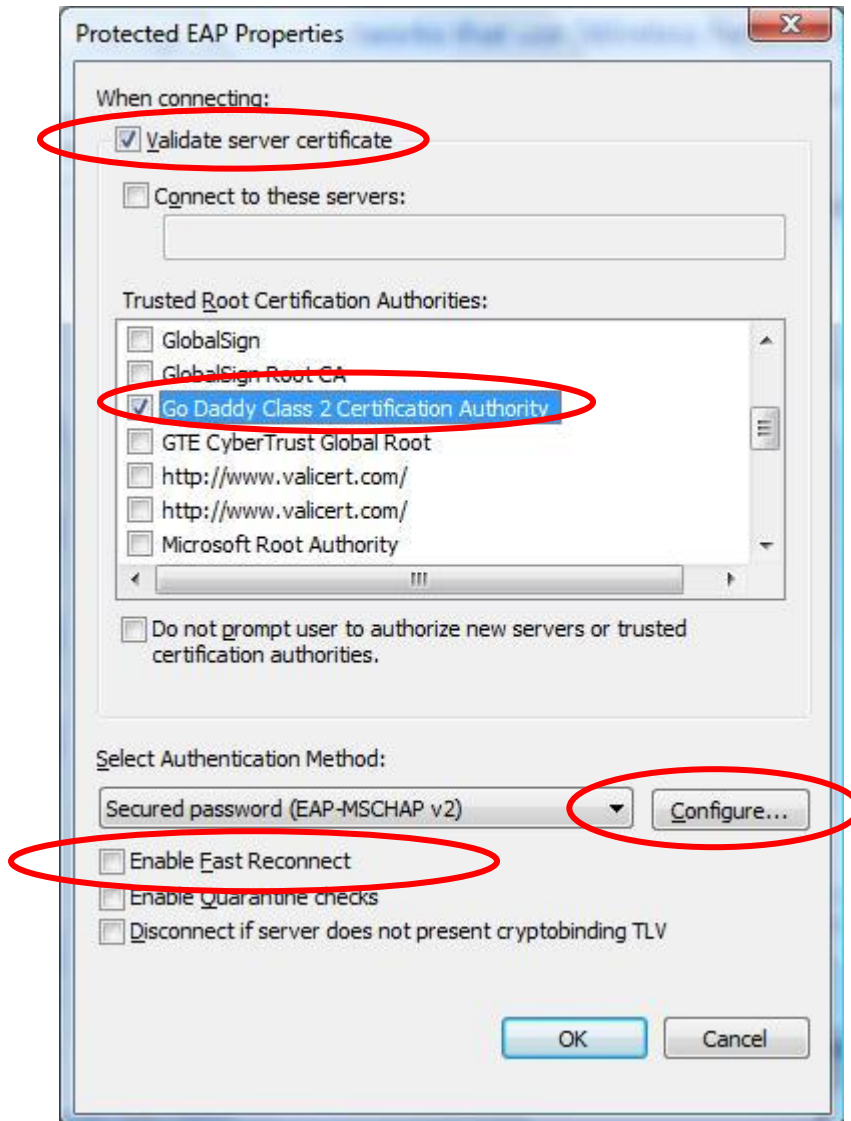
Click on **Settings**.



i) Configure the following Protected EAP Properties:

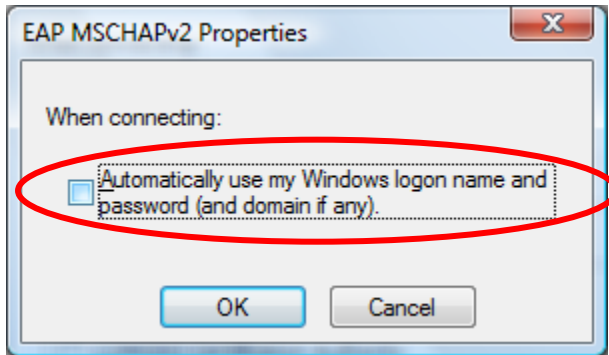
- **Validate server certificate:** Check
- **Connect to these servers:** Uncheck
- **Trusted Root Certification Authorities:** Go Daddy Class 2 Certification Authority
- **Enable Fast Reconnect:** Uncheck

Click on **Configure...**

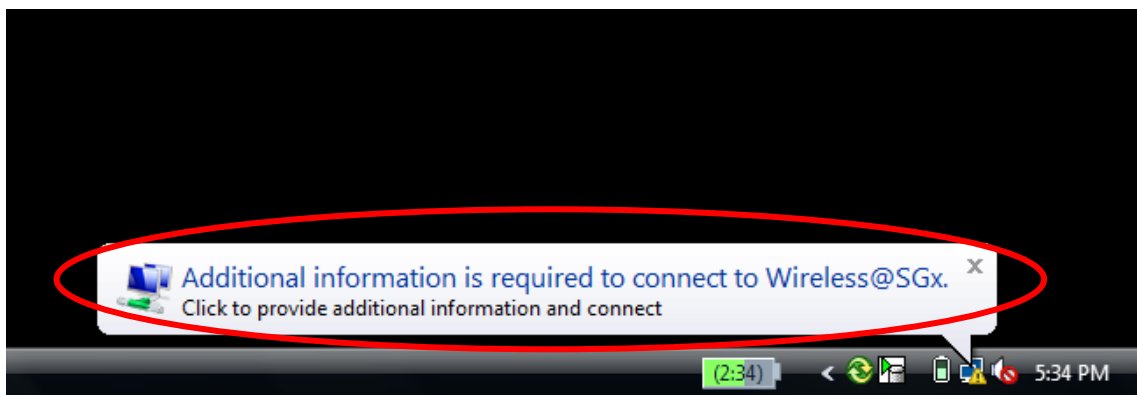




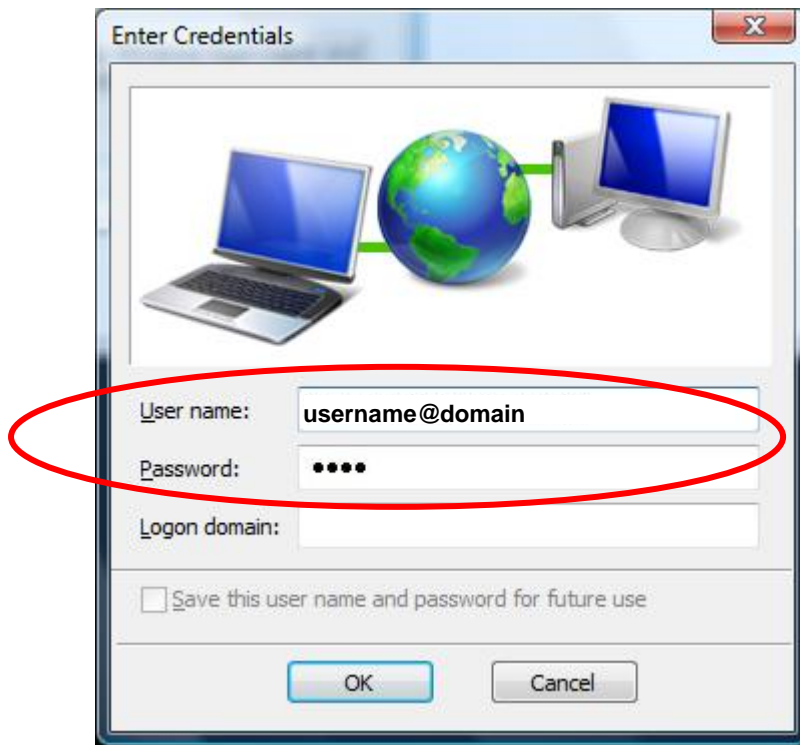
- j) Uncheck **Automatically use my Windows logon name and password (and domain if any)**
- k) Click **OK** until you are back at the Control Panel.
- l) Close **Control Panel** and return to the Windows Desktop.



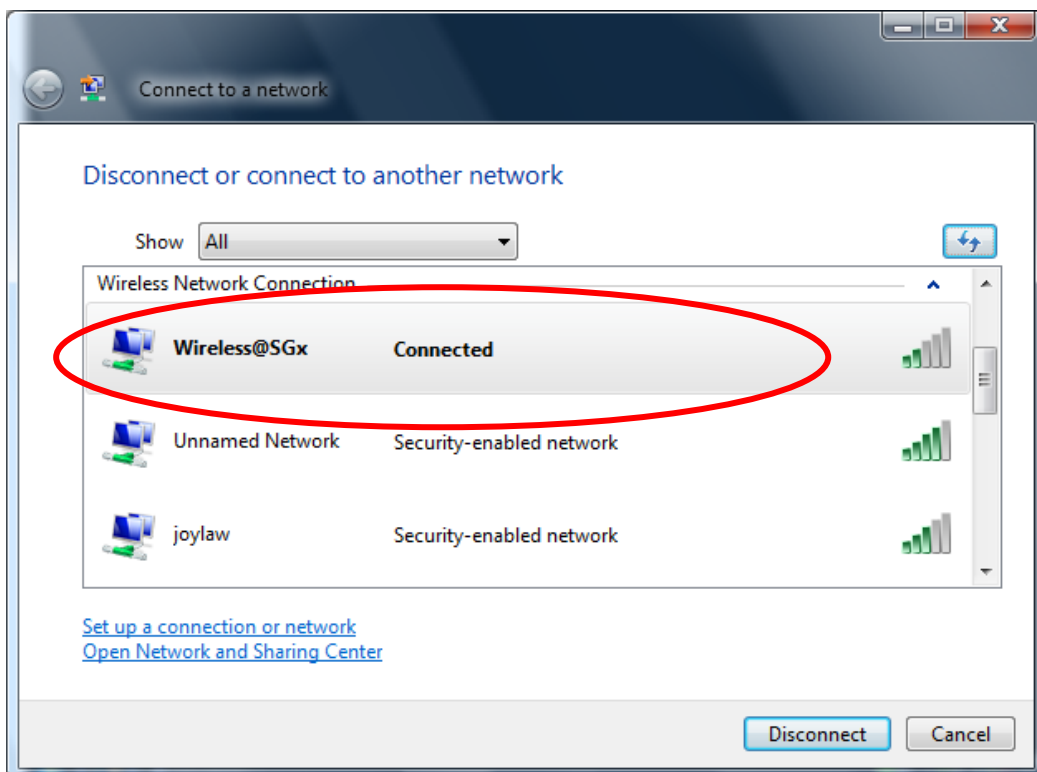
- m) Click on the popup at the task bar



- n) In the **User name** box, enter your Wireless@SG username followed by @domain format. In the **Password** box, enter your Wireless@SG password. Leave the **Logon Domain** box empty.



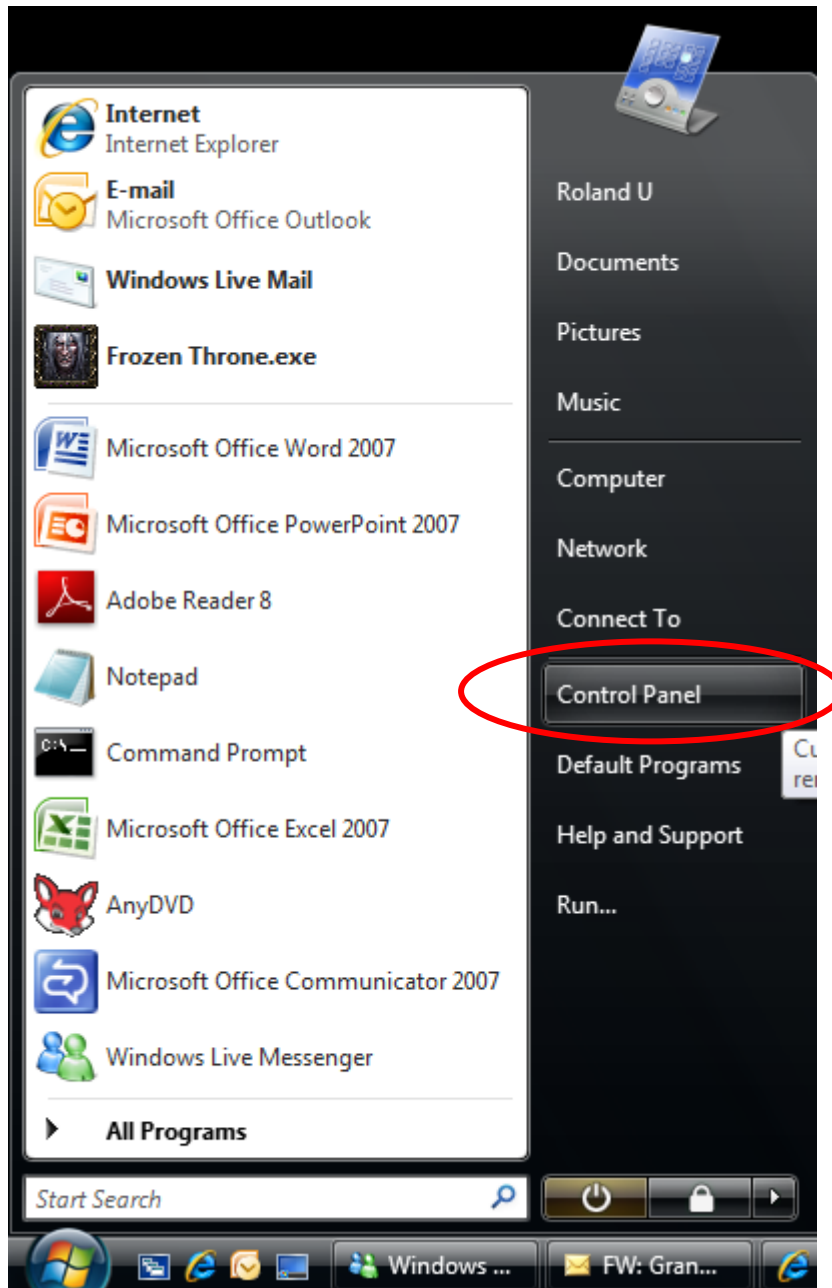
- o) You are now connected to Wireless@SGx



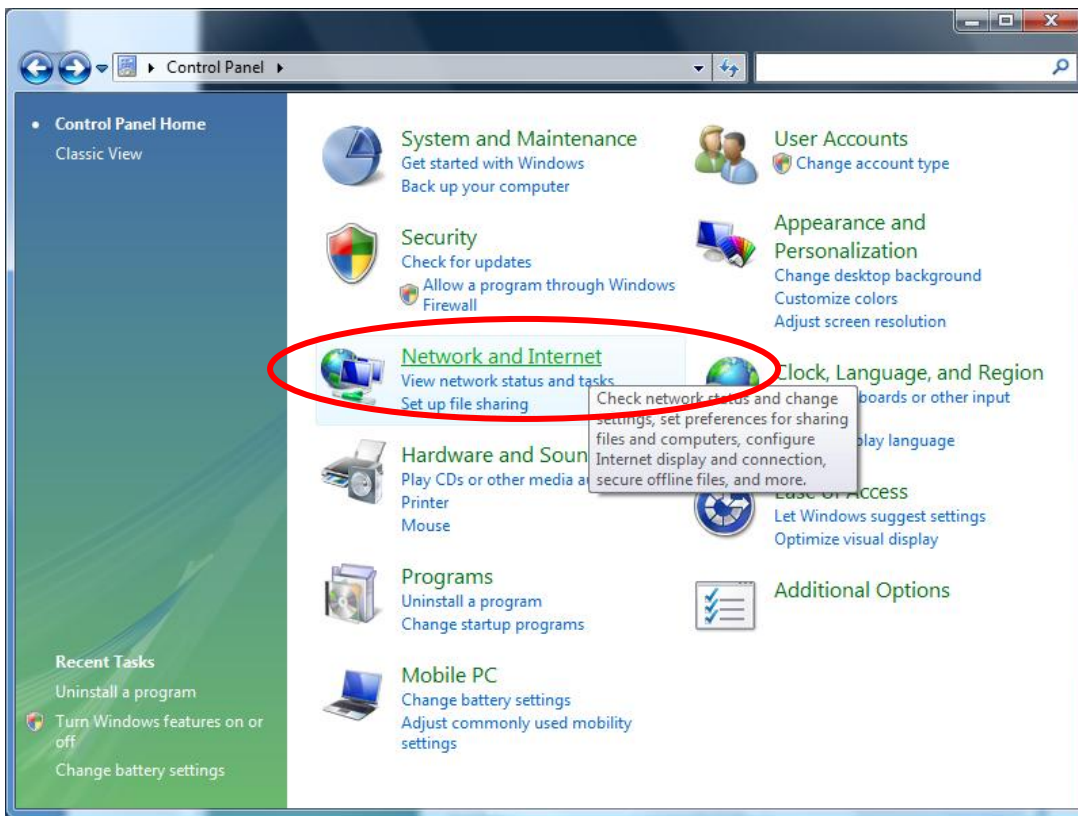
### 3 Uninstall SSA profile

Follow the steps below to remove the Wireless@SGx settings:

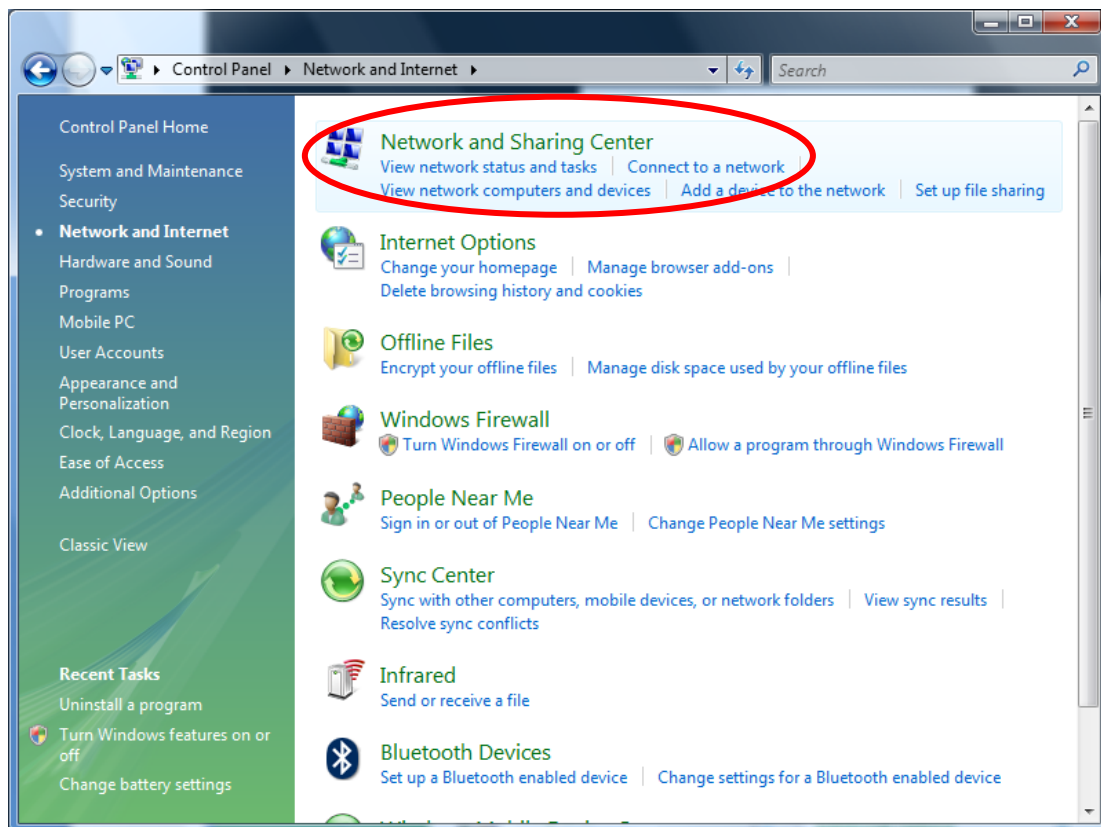
- a) Click on **Start** and select **Control Panel**.



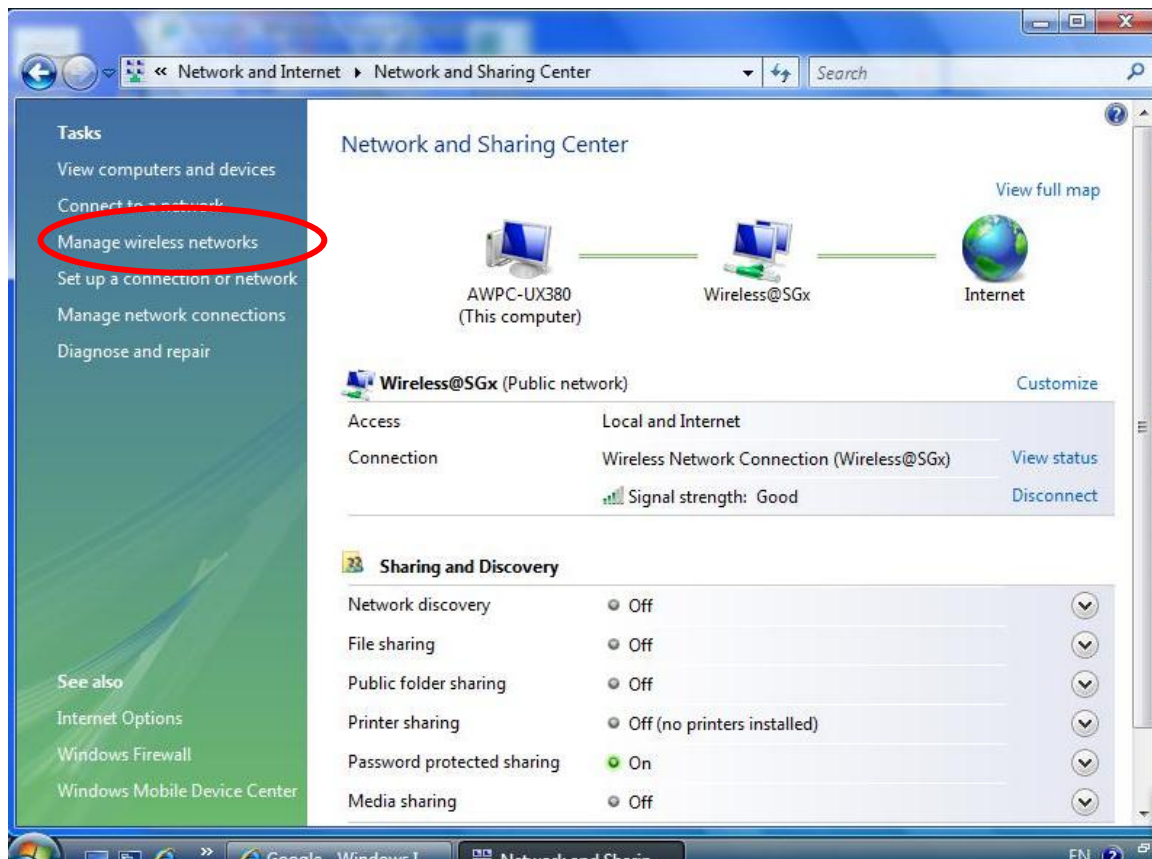
b) Select **Network and Internet**.



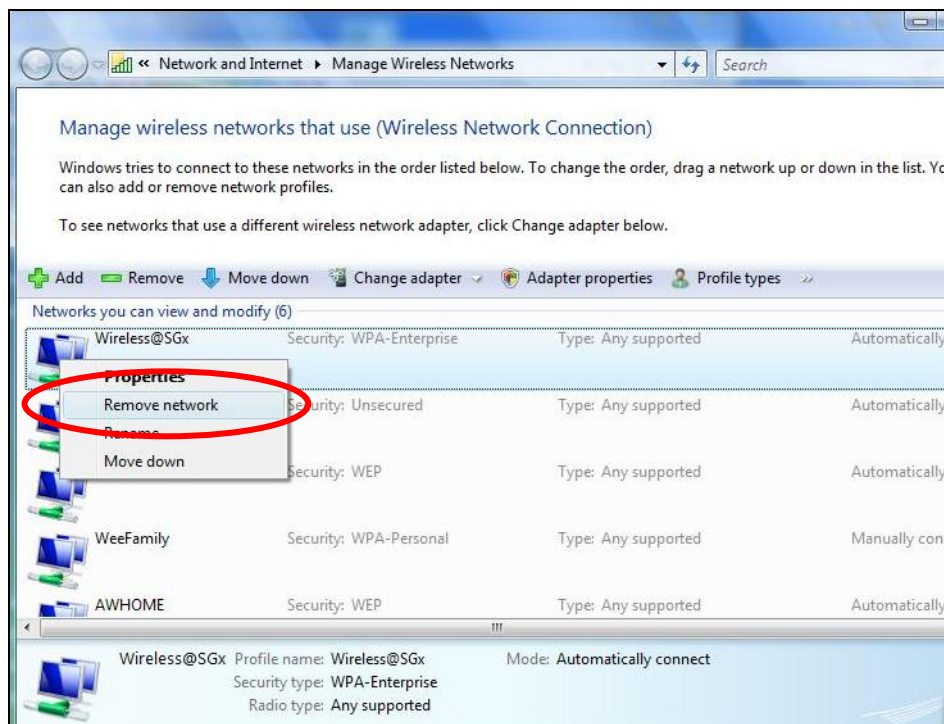
c) Select **Network and Sharing Center**.



d) Click on **Manage Wireless Network**.



e) Right-click on **Wireless@SGx** and click **Remove network**.



- f) A warning dialog box will appear. Click **OK**.

